



FRONT ELEVATION

OVERVIEW

TOTAL: 4360 Sq. Ft.

BEDROOMS: 5

BATHROOMS: 3.5

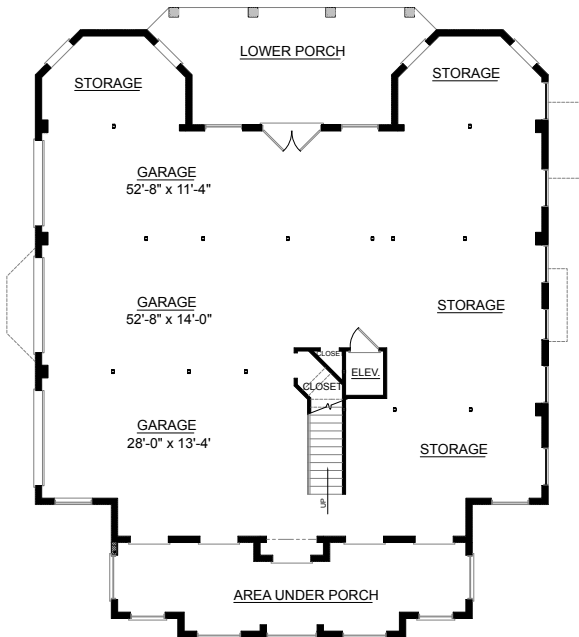
- Spacious Elegant Plan with 10' Ceilings on First Floor: 9' Second
- Impressive Open Foyer Greets Guests and Adjoins Formal Dining Room and Private Study or Home Office
- Bright and Sunny Morning Room Opens Into Kitchen and Breakfast Area
- Exquisite Master Bedroom with Pampering Bath Boasts Two Walk-In Closets, His/Her Vanities, and Separate Shower
- Four Spacious Second Floor Bedrooms Each With Walk-In Closets and Private Bath Access
- Expansive Second Floor Playroom with Upper Deck Access

NOTE:
ELEVATION SHOWS
BRICK VENEER ON
GROUND FLOOR.
STOCK PLAN IS DRAWN
WITH STUCCO

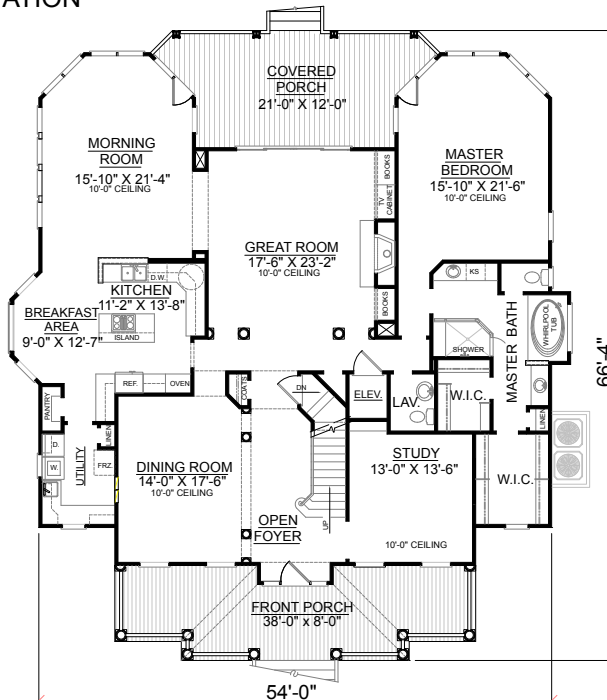


REAR ELEVATION

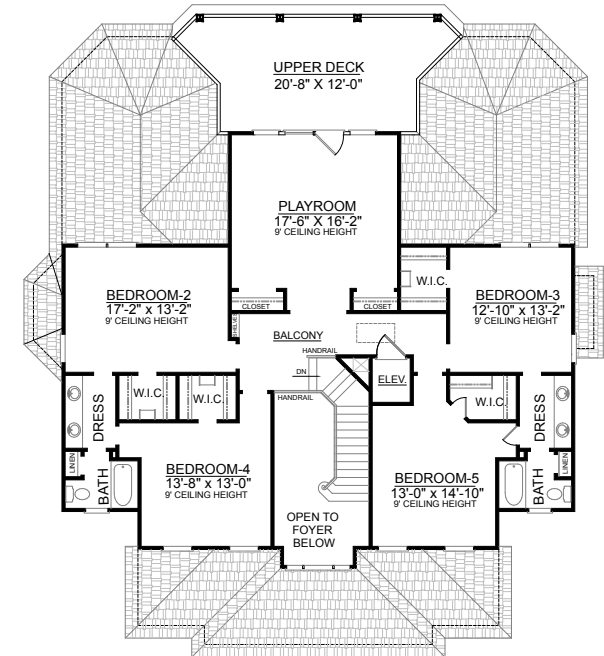
First Floor	2655	Sq. Ft.
Second Floor	1705	Sq. Ft.
Finished Ground Floor	-----	Sq. Ft.
Garage	2655	Sq. Ft.
Upper Deck	298	Sq. Ft.
Covered Porch	298	Sq. Ft.
Front Porch	366	Sq. Ft.
Overall Height	37'-10"	



GROUND FLOOR PLAN



FIRST FLOOR PLAN



SECOND FLOOR PLAN

Plan No.
4360