



FRONT ELEVATION



REAR ELEVATION

OVERVIEW

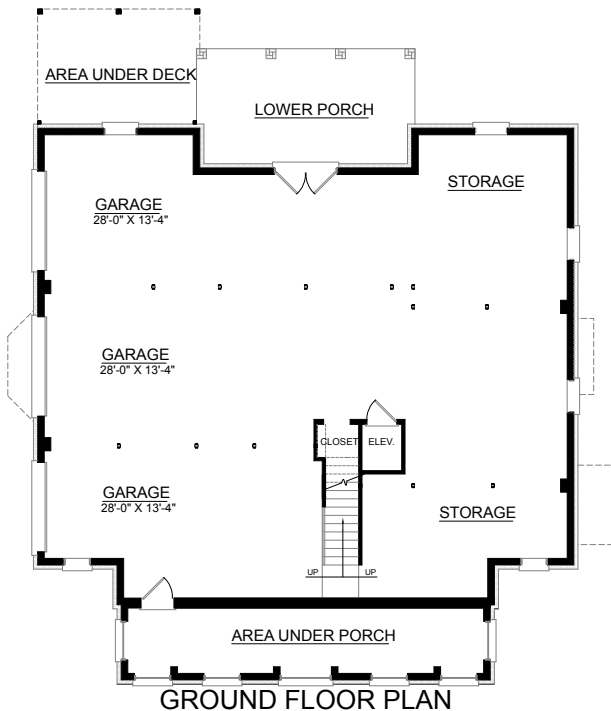
TOTAL: 4311 Sq. Ft.

BEDROOMS: 5

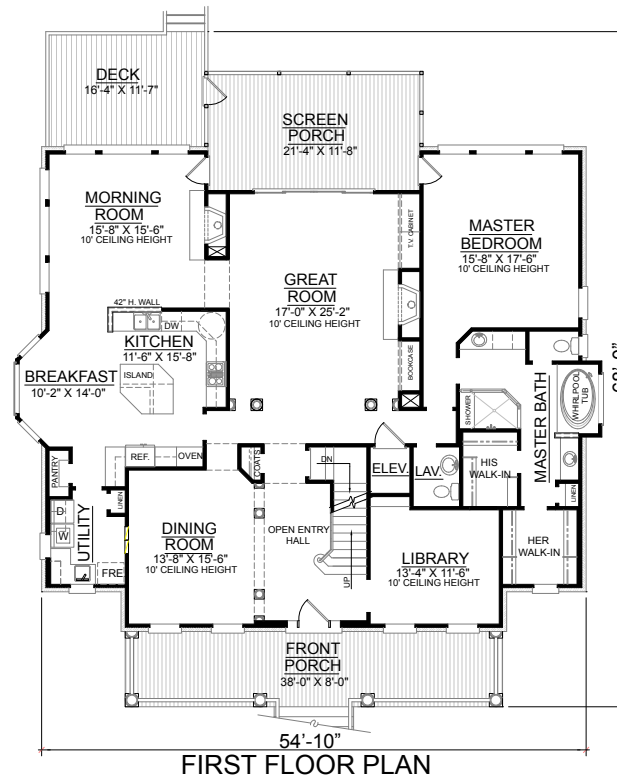
BATHROOMS: 3.5

- Impressive Facade with Full Height Brick Veneer and Two Story Columns
- First Floor Library Adjacent to Impressive Two Story Entry Great for Home Office
- Relaxing Morning Room Complete with Second Fireplace
- Convenient Elevator from Ground Floor to Second Floor
- Four Bedrooms with "Jack and Jill" Baths Surround Roomy Media Room which Includes Upper Deck Access
- Large 3 Bay Side Entry Garage with Abundant Storage
- 10' Ceilings Throughout First Floor, 9' on Second

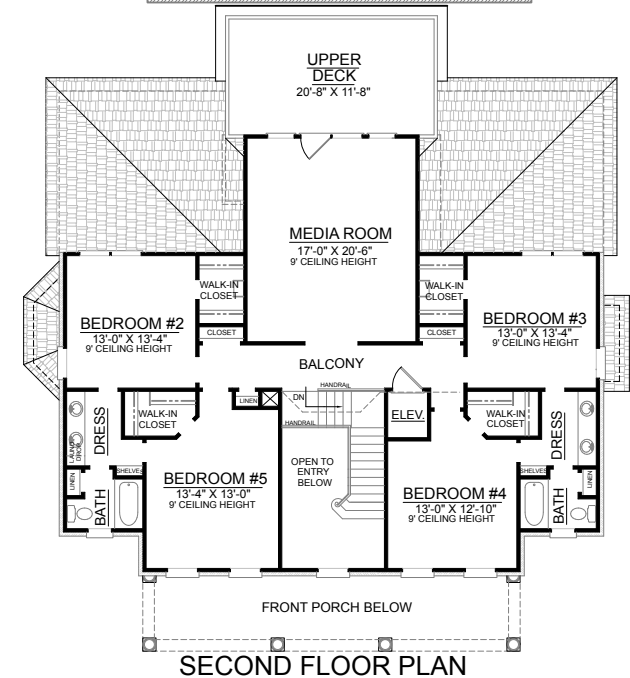
First Floor	2554	Sq. Ft.
Second Floor	1756	Sq. Ft.
Finished Ground Floor	-----	Sq. Ft.
Garage	2528	Sq. Ft.
Deck	189	Sq. Ft.
Screen Porch	260	Sq. Ft.
Front Porch	288	Sq. Ft.
Overall Height	39'-6"	



GROUND FLOOR PLAN



FIRST FLOOR PLAN



SECOND FLOOR PLAN

Plan No.
4311