



FRONT ELEVATION



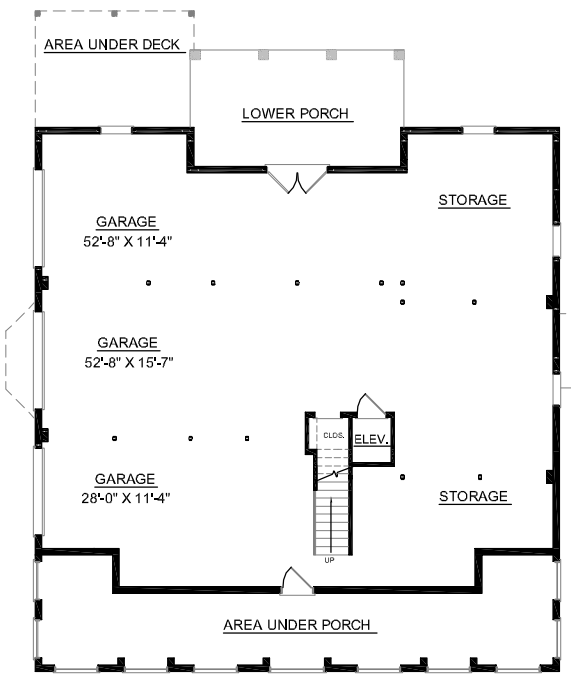
REAR ELEVATION

See Plan #4362 for Larger Design

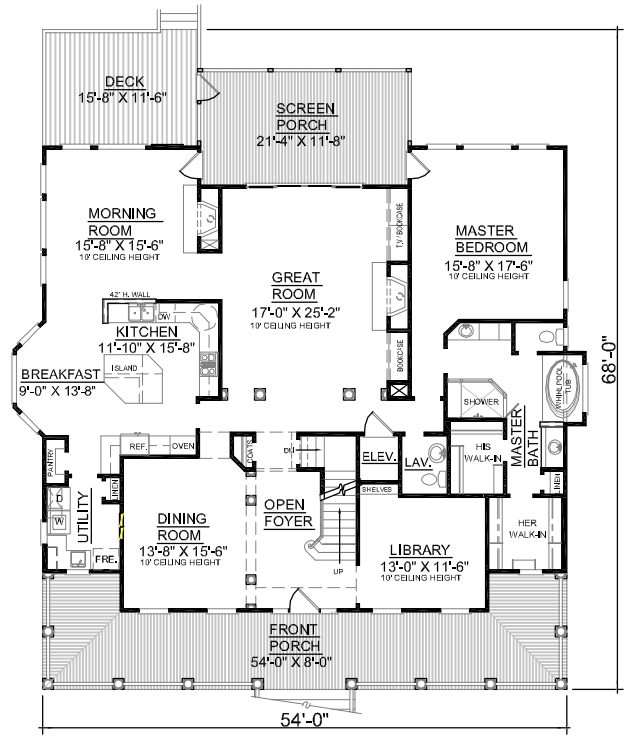
**OVERVIEW**

- TOTAL:** 4193 Sq. Ft.  
**BEDROOMS:** 5  
**BATHROOMS:** 3.5
- Inviting Full Length Front Porch for Pleasing Curb Appeal
  - 10' Foot First Floor Ceiling Height ; 9' on Second
  - Kitchen Connects to Breakfast Area and Adjoins Charming Morning Room with Fireplace and Screen Porch Access
  - First Floor Master Suite Showcases Private Screen Porch Access, and Sensational Master Bath
  - Second Floor Includes Four Bedrooms, Each with Private Bath Access and Walk- In Closets
  - Expansive Second Floor Playroom Includes Upper Deck for Remarkable Views

First Floor	2485	Sq. Ft.
Second Floor	1708	Sq. Ft.
Finished Ground Floor	—	Sq. Ft.
Garage	2444	Sq. Ft.
Deck	196	Sq. Ft.
Screen Porch	260	Sq. Ft.
Front Porch	496	Sq. Ft.
Overall Height	39'-6"	

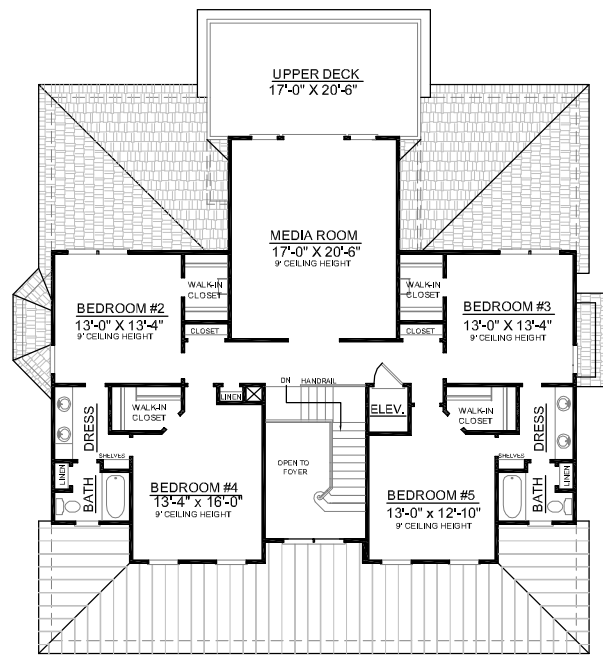


GROUND FLOOR PLAN



FIRST FLOOR PLAN

Plan No.  
**4193**



SECOND FLOOR PLAN