



FRONT ELEVATION

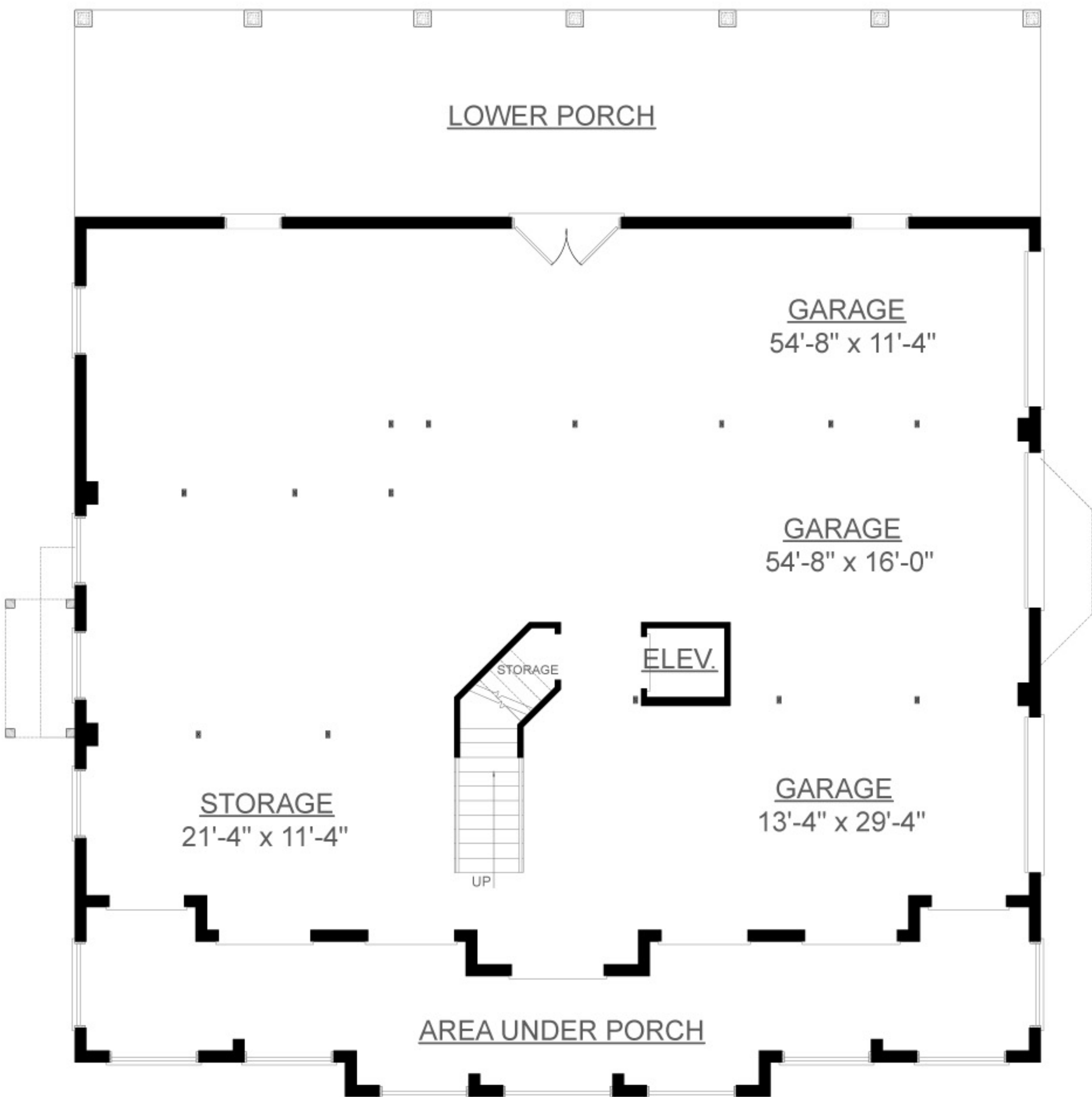


REAR ELEVATION

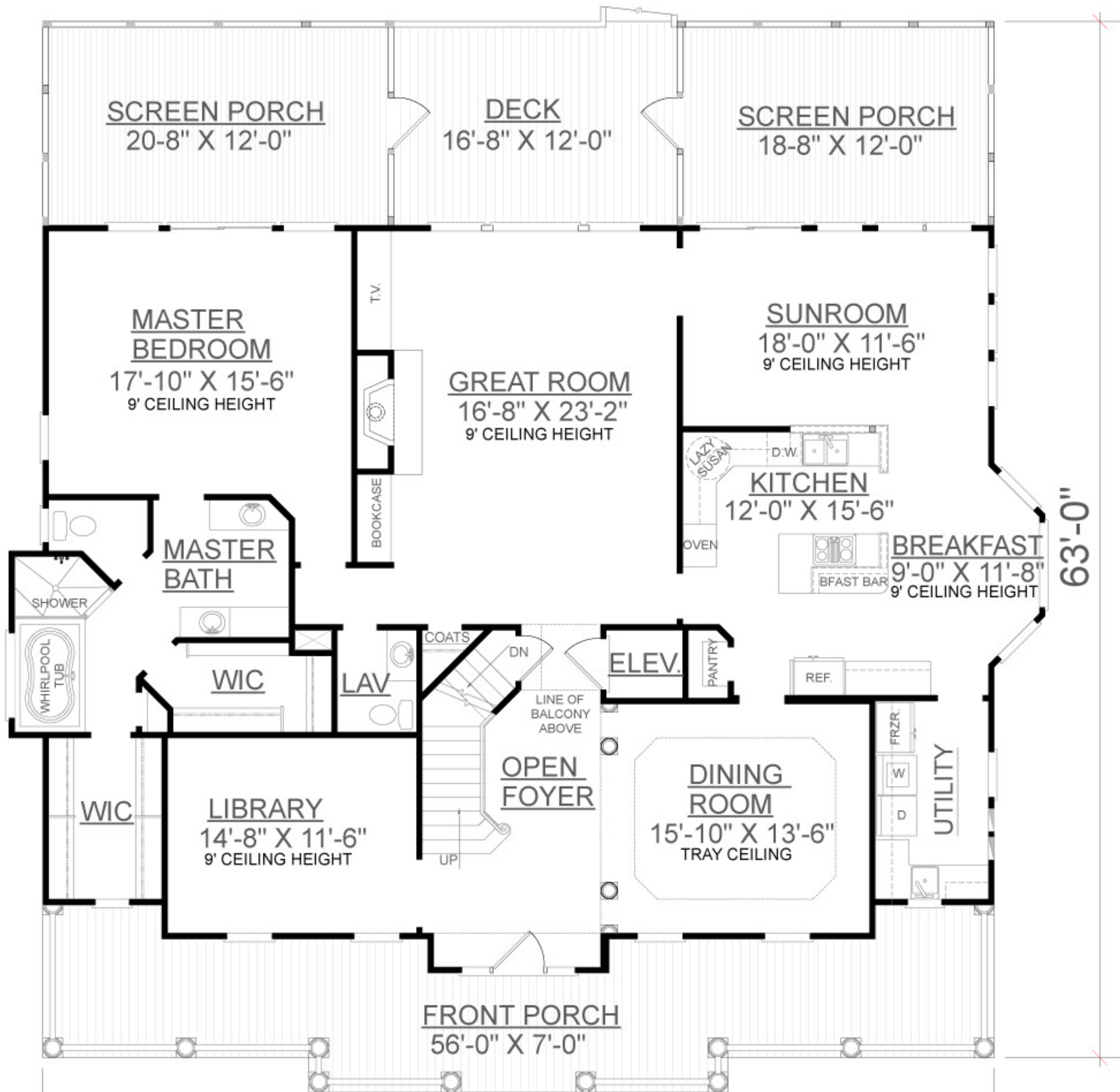
First Floor	2394	Sq. Ft.
Second Floor	1500	Sq. Ft.
Finished Ground Floor	----	Sq. Ft.
Garage	2345	Sq. Ft.
Deck	226	Sq. Ft.
Screen Porches	472	Sq. Ft.
Front Porch	448	Sq. Ft.
Upper Deck	226	Sq. Ft.
Overall Height	37' 9"	

OVERVIEW

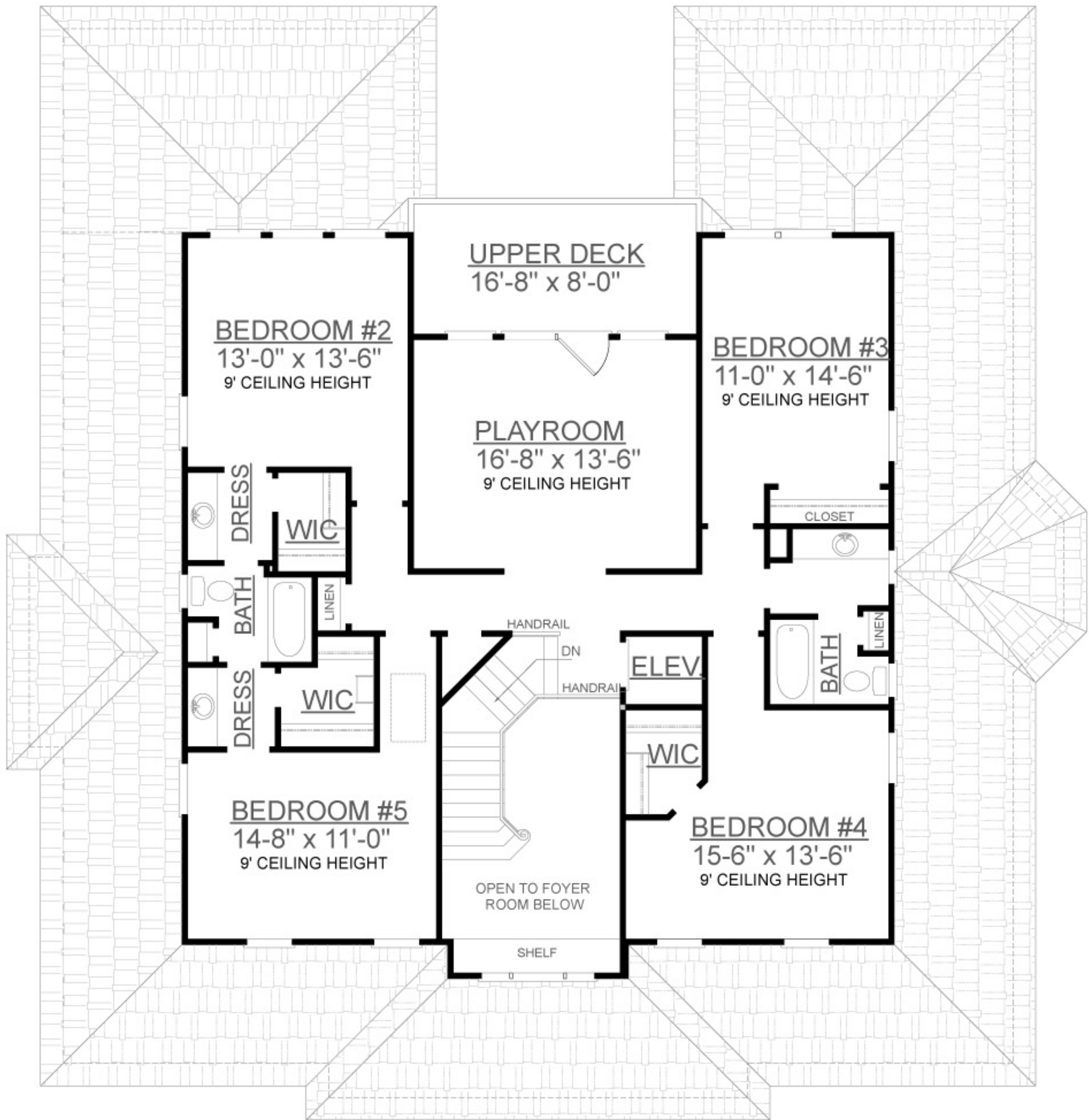
- TOTAL: 3894 Sq. Ft.
BEDROOMS: 5
BATHROOMS: 3.5
- 9' Ceiling Height Throughout First and Second Floor
 - Open Two Story Foyer Adjoins Formal Dining Room
Separated by Elegant Decorative Columns and Tray Ceiling
 - Convenient Elevator Accessible to all Floors
 - Expansive Windows in Sunroom and Great Room Infuse Home with Light and Space
 - Full Length Wrap Front Porch Great for Summer Nights
 - First Floor Master Suite Showcases Striking Bath Complete with 2 Walk-In Closets, Separate Vanities, and Relaxing Whirlpool Tub



GROUND FLOOR PLAN



FIRST FLOOR PLAN



SECOND FLOOR PLAN