



FRONT ELEVATION

OVERVIEW

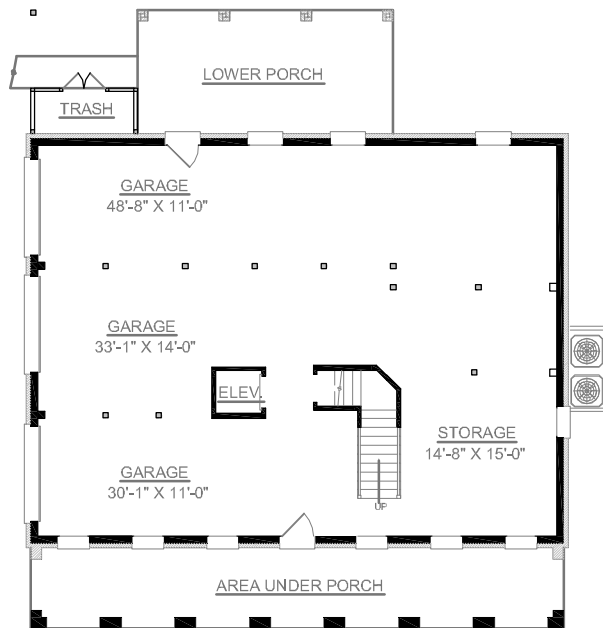
TOTAL: 3534 Sq. Ft.  
BEDROOMS: 5  
BATHROOMS: 4

- Versatile Plan Perfect for Large Family
- Impressive Open Foyer with Decorative Columns Into Formal Dining Room
- Spacious Kitchen with Island Cooktop and Large Pantry Adjoins Sunny Breakfast Area
- First Floor Guest Bedroom with Full Bath
- Comfortable Second Floor Master Suite with 2 Walk-In Closets Dual Sink Vanity, and Whirlpool Tub
- "Jack and Jill" Bath Separates Bedroom #3 and #4
- 9' Ceilings on first Floor; 8' Ceilings on Second Floor

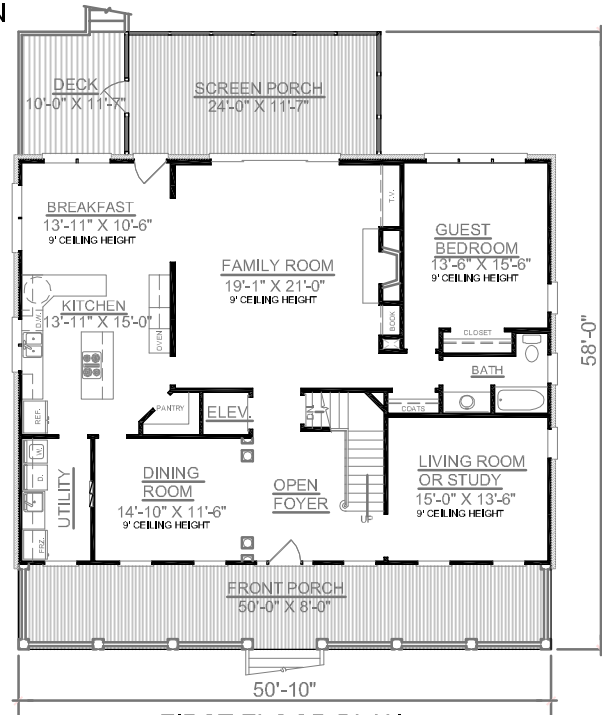
First Floor	1953	Sq. Ft.
Second Floor	1581	Sq. Ft.
Finished Ground Floor	—	Sq. Ft.
Garage	1953	Sq. Ft.
Deck	116	Sq. Ft.
Screen Porch	278	Sq. Ft.
Front Porch	400	Sq. Ft.
Overall Height	34'-9"	



REAR ELEVATION



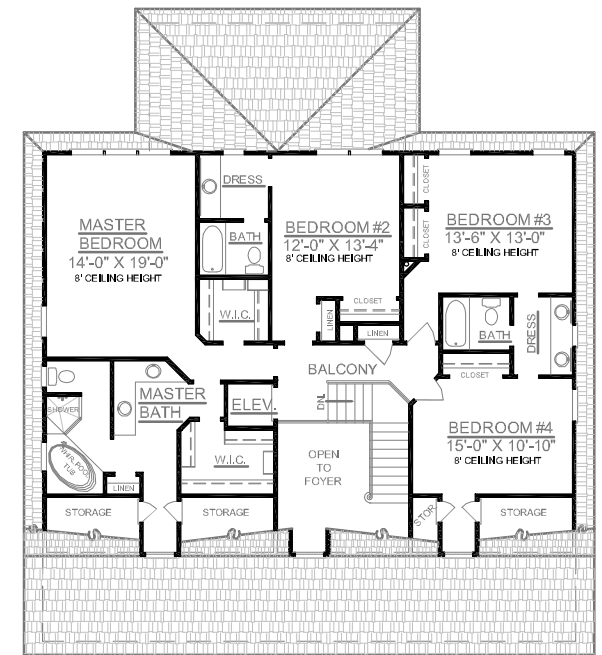
GROUND FLOOR PLAN



FIRST FLOOR PLAN

Plan No.

**3534**



SECOND FLOOR PLAN