



FRONT ELEVATION

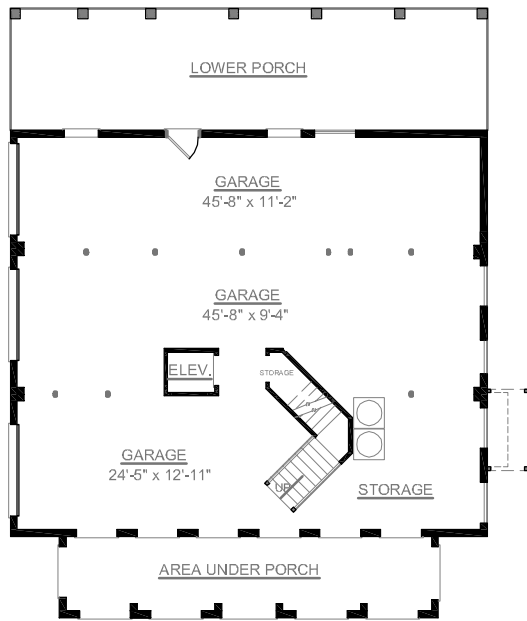
OVERVIEW

- TOTAL: 3527 Sq. Ft.
- BEDROOMS: 4
- BATHROOMS: 3.5
- 10' Ceiling Heights on First Floor; 9' Ceiling Heights on Second
- Formal Dining Room with Tray Ceiling and Decorative Columns
- Luxurious Master Suite with Private Porch Access, 2 Walk-In Closets, Dual Sink Vanity, and Relaxing Whirlpool Tub
- Spacious Kitchen Features Large Working Island, Abundant Countertops and Cabinetry, Breakfast Bar and Large Pantry
- Convenient Elevator Accessible to All Floors
- Second Floor Playroom Surrounded by 3 Spacious Bedrooms With Private Bath Access
- 3 Bay Side Entry Garage with Storage

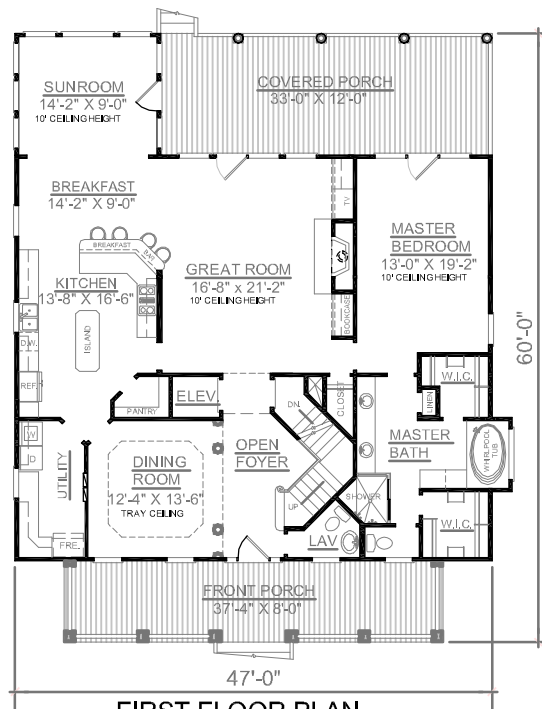
First Floor	2067	Sq. Ft.
Second Floor	1460	Sq. Ft.
Future Basement	-----	Sq. Ft.
Garage	1880	Sq. Ft.
Deck (Upper and Lower)	628	Sq. Ft.
Screen Porch	-----	Sq. Ft.
Front Porch	297	Sq. Ft.
Overall Height	36'-6"	



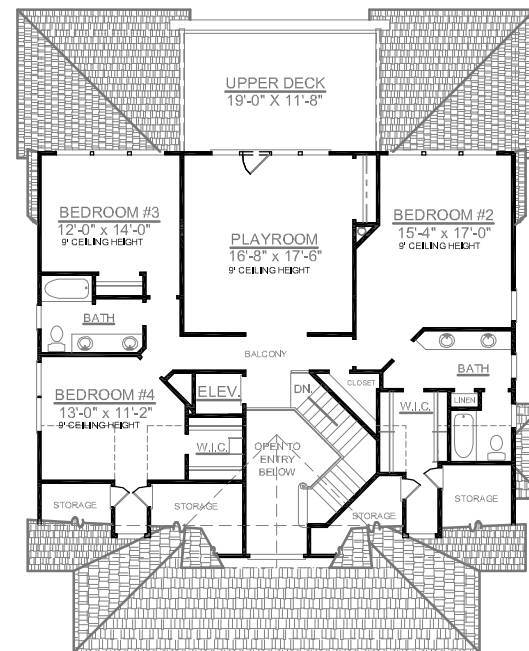
REAR ELEVATION



GROUND FLOOR PLAN



FIRST FLOOR PLAN



SECOND FLOOR PLAN