



FRONT ELEVATION

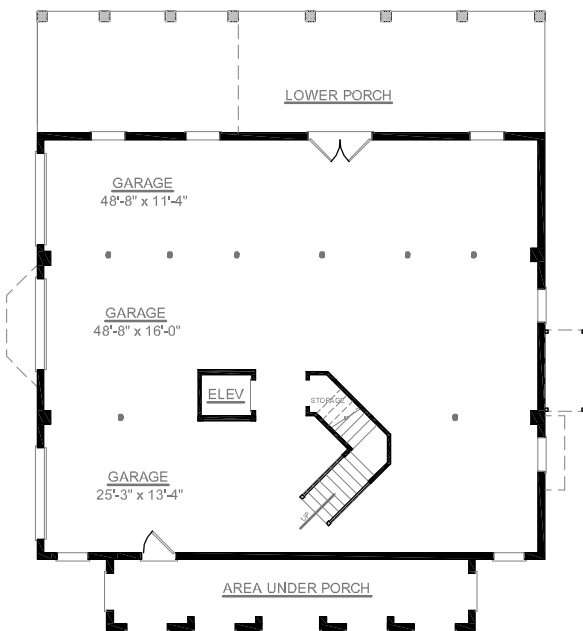
**OVERVIEW**

- TOTAL: 3462 Sq. Ft.
- BEDROOMS: 3
- BATHROOMS: 3.5
- 9' Ceilings Throughout First and Second Floor
- Impressive Open Foyer Greets Guests and Adjoins Formal Dining Room with Decorative Columns
- Bright and Sunny Breakfast Area Opens Into Kitchen and Sunroom
- First Floor Master Bedroom with Pampering Bath and Roomy Double Walk-In Closets
- Convenient Elevator Accessible to all Floors
- Three Spacious Second Floor Bedrooms with Walk-In Closets
- Additional Second Floor Study with Upper Deck Access

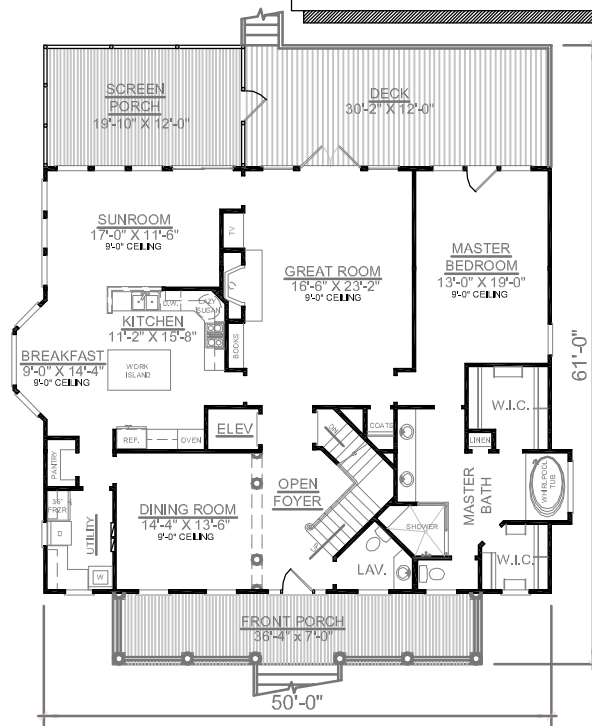
First Floor	2142	Sq. Ft.
Second Floor	1320	Sq. Ft.
Finished Ground Floor	-----	Sq. Ft.
Garage	2100	Sq. Ft.
Upper Deck	169	Sq. Ft.
Screen Porch	238	Sq. Ft.
Front Porch	254	Sq. Ft.
Overall Height	39'-4"	



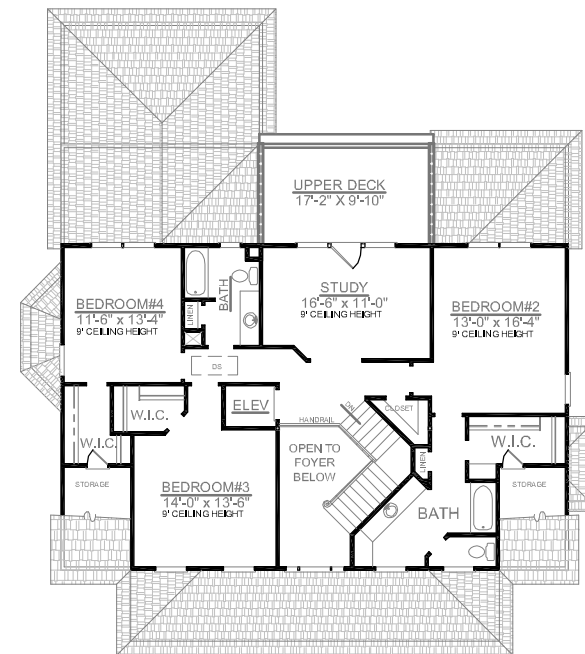
REAR ELEVATION



GROUND FLOOR PLAN



FIRST FLOOR PLAN



SECOND FLOOR PLAN