



FRONT ELEVATION

**OVERVIEW**

TOTAL: 3280 Sq. Ft.  
 BEDROOMS: 4  
 BATHROOMS: 3.5

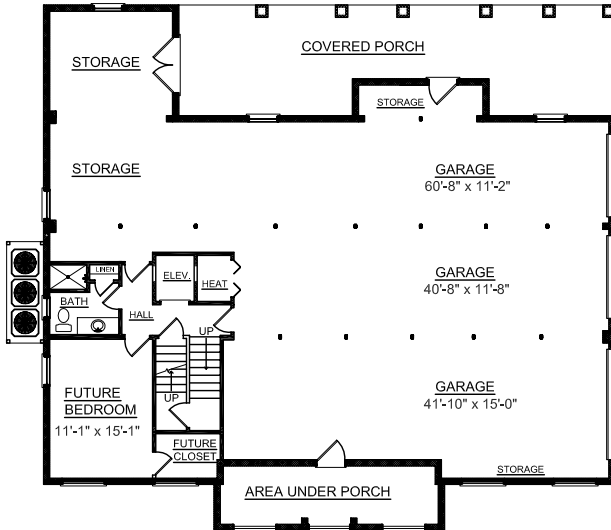
- 10' Ceiling Heights on First Floor; 8' Ceiling Heights on Second
- Formal Dining Room with Tray Ceiling and Decorative Columns
- Luxurious Master Suite with Private Porch Access, 2 Walk-In Closets, Dual Sink Vanity, and Relaxing Whirlpool Tub
- Spacious Kitchen Features Large Working Island, Abundant Countertops and Cabinetry, Breakfast Bar and Large Pantry
- Convenient Elevator Accessible to All Floors
- Second Floor Bedroom and Loft With Private Bath Access
- 3 Bay Side Entry Garage with Storage



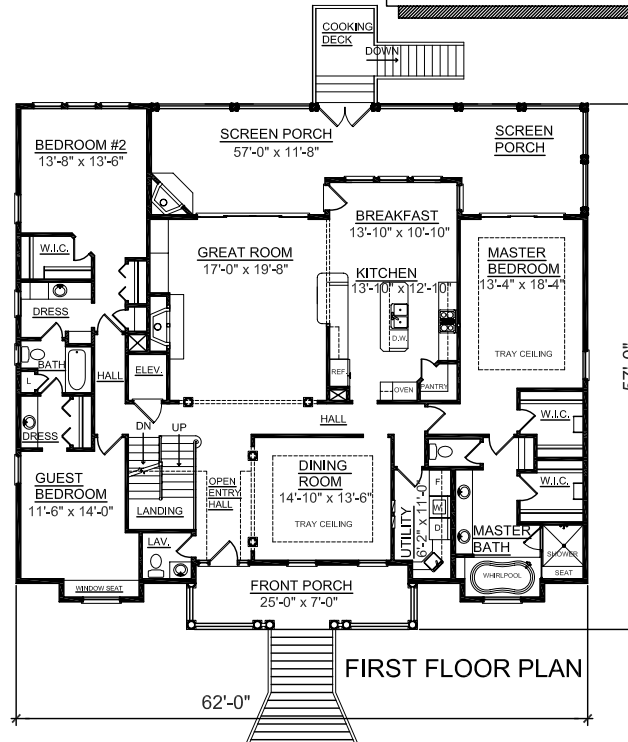
REAR ELEVATION

Please note:  
**Exterior walls are 2x6 studs**

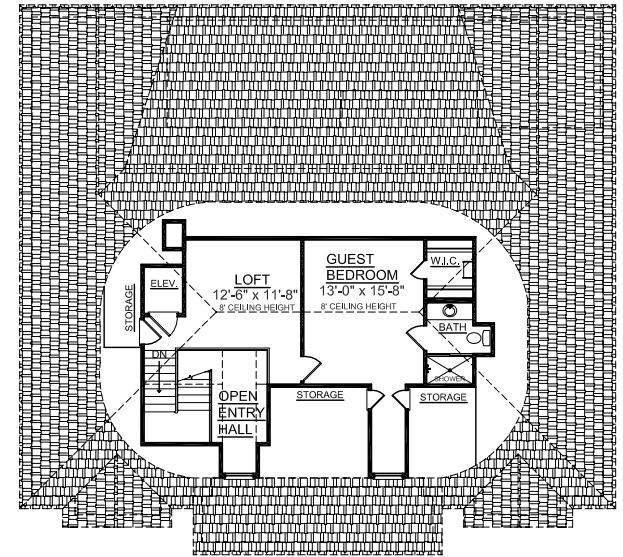
First Floor	2706	Sq. Ft.
Second Floor	574	Sq. Ft.
Garage	2669	Sq. Ft.
Cooking Deck	54	Sq. Ft.
Screen Porch	509	Sq. Ft.
Front Porch	171	Sq. Ft.
Overall Height	36'-9"	



GROUND FLOOR PLAN



FIRST FLOOR PLAN



SECOND FLOOR PLAN

Plan No.  
**3280**