



## OVERVIEW

TOTAL:	2789 Sq. Ft.
--------	--------------

BEDROOMS: 3 +

BATHROOMS: 3.5

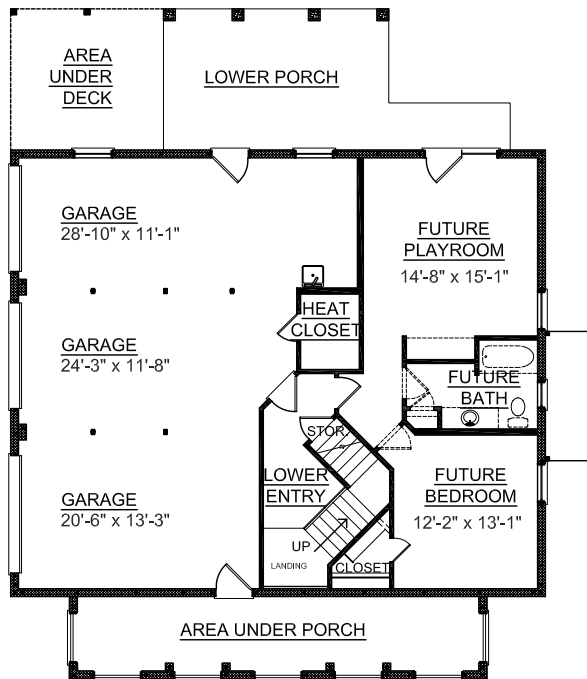
- 9' Ceiling Heights Throughout both First and Second Floors
- Second Floor with Study & Jack & Jill Baths
- Each Spacious Bedroom Consists of Large Closets
- Great Room opens into Breakfast Area and Kitchen
- Kitchen has Walk-in Pantry and Large Work Island
- Master Bedroom Boasts 2 Walk-in Closets, Dual Sink Vanity, 72"x42" whirlpool Tub & Separate Shower
- Abundant Storage Located on Every Floor
- Additional Living Space of 763 Sq. Ft. in Basement
- 3 Bay Side Entry Garage

First Floor	1751	Sq. Ft.
Second Floor	1038	Sq. Ft.
Garage Unheated	966	Sq. Ft.
Garage Future Heated	763	Sq. Ft.
Deck	134	Sq. Ft.
Screen Porch	230	Sq. Ft.
Front Porch	248	Sq. Ft.
Overall Height	34'-10" +/-	

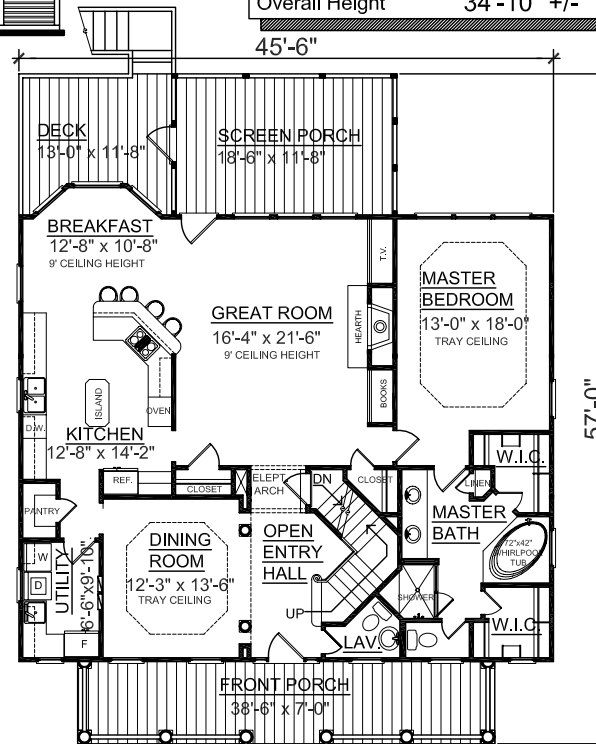
For Elevator Shaft  
See Plan # 2922 & # 2941



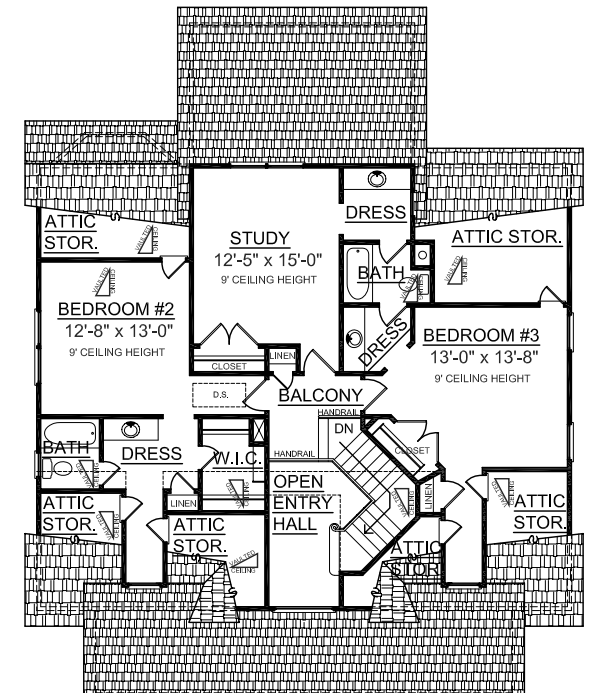
REAR ELEVATION



## GROUND FLOOR PLAN



### FIRST FLOOR PLAN



## SECOND FLOOR PLAN