



FRONT ELEVATION

OVERVIEW

TOTAL: 2745 Sq. Ft.

BEDROOMS: 4

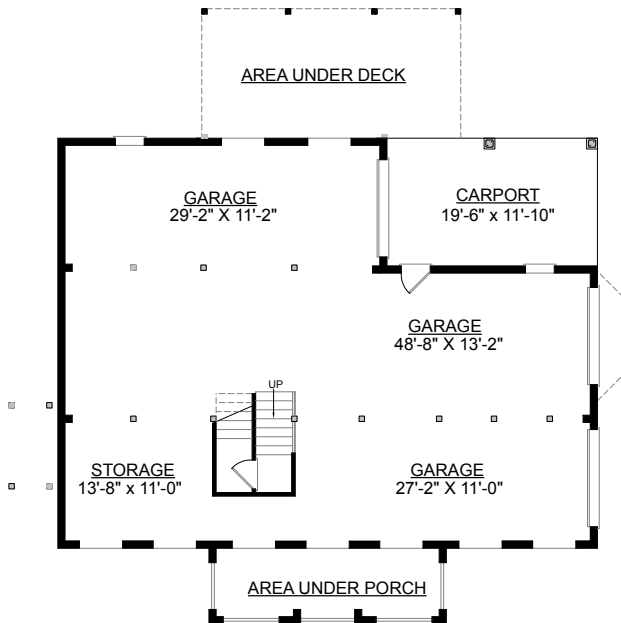
BATHROOMS: 3.5

- 9' Ceiling Heights Throughout First Floor; 8' on Second Floor
- Spacious Great Room has Vaulted Ceiling
- Kitchen is Complete with Breakfast Area, Island, Pantry, Desk, and Bay Window
- First Floor Master Suite Boasts 2 Walk-In Closets, Double Vanity Sinks, and Whirlpool Tub
- Second Floor Bridge Overlooks Foyer and Great Room
- Similar to 2745, This Home Features a Simple Staircase, with Powder Room Located off the Entry as well as a Larger Bedroom #2 with Smaller Walk-In-Closet

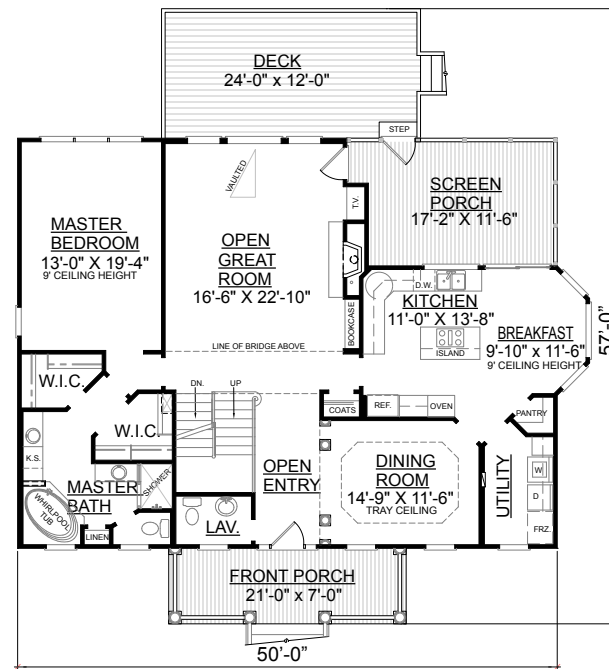


REAR ELEVATION

First Floor	1712	Sq. Ft.
Second Floor	1060	Sq. Ft.
Finished Ground Floor	-----	Sq. Ft.
Garage	1669	Sq. Ft.
Deck	288	Sq. Ft.
Screen Porch	215	Sq. Ft.
Front Porch	154	Sq. Ft.
Overall Height	36'11"	

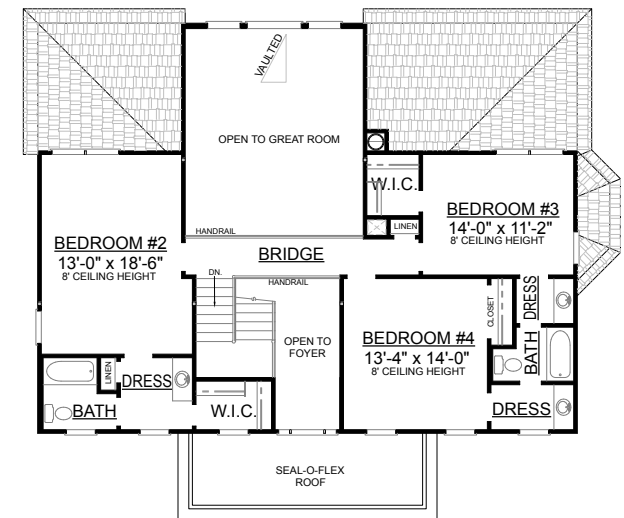


GROUND FLOOR PLAN



FIRST FLOOR PLAN
Plan No.

2772



SECOND FLOOR PLAN