



FRONT ELEVATION

### OVERVIEW

**TOTAL:** 2670 Sq. Ft.  
**BEDROOMS:** 4  
**BATHROOMS:** 3.5

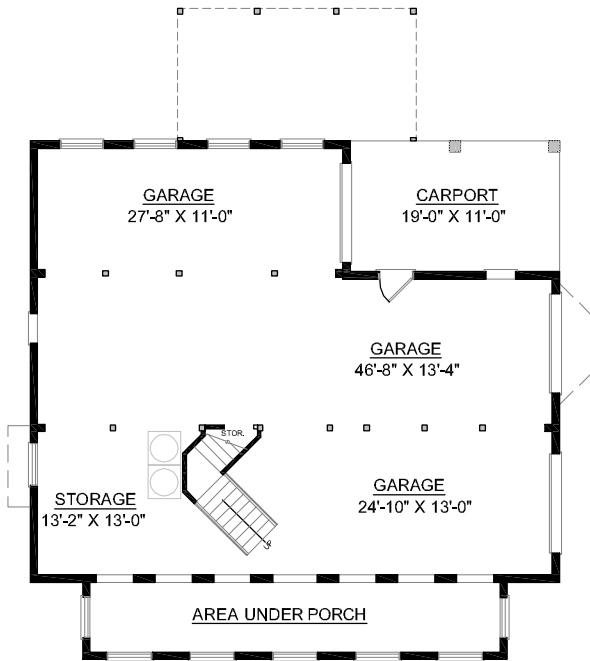
- Impressive Open Great Room Accented with Two Story Arched Top Windows
- Second Floor Bridge Overlooks Vaulted Great Room and Foyer
- First Floor Master Suite Includes Spacious Bath Complete with 2 Walk-In Closets, Dual Sink Vanity, and Whirlpool Tub
- 9' Ceilings Throughout First Floor; 8' on Second
- Gourmet Kitchen Adjoins Sunny Breakfast Area with Large Working Island, Pantry, and Convenient Pass-Thru to Roomy Screen Porch
- 3 Bay Side Entry Garage with Abundant Storage and Carport

See #2877 for Sunroom off Kitchen/Breakfast Area

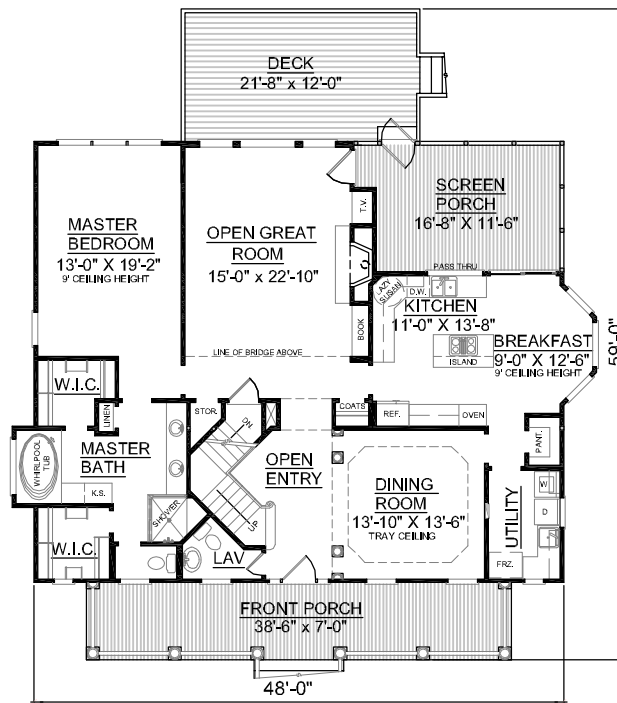


REAR ELEVATION

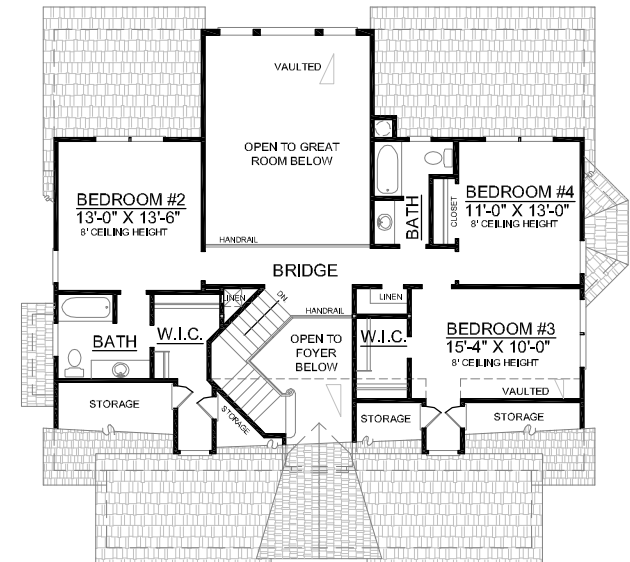
First Floor	1749	Sq. Ft.
Second Floor	921	Sq. Ft.
Finished Ground Floor	----	Sq. Ft.
Garage	1695	Sq. Ft.
Deck	260	Sq. Ft.
Screen Porch	209	Sq. Ft.
Front Porch	270	Sq. Ft.
Overall Height	34'-7"	



GROUND FLOOR PLAN



FIRST FLOOR PLAN



SECOND FLOOR PLAN

Plan No.  
**2670**