



FRONT ELEVATION

**OVERVIEW**

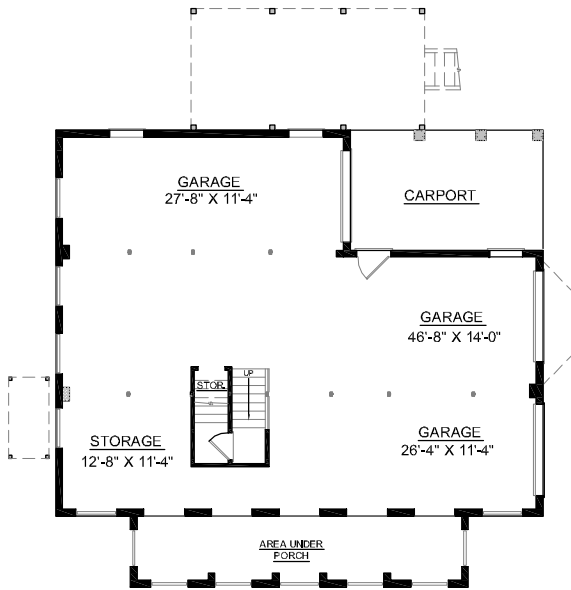
- TOTAL:** 2617 Sq. Ft.  
**BEDROOMS:** 4  
**BATHROOMS:** 3.5
- 9' Ceilings Throughout First Floor; 8' on Second
  - Striking Arched Topped Window in Great Room Illuminates this 2 Story Space
  - Second Floor Bridge Overlooks Great Room and Foyer
  - Spacious Kitchen Boasts Convenient Pass-Thru to Roomy Screen Porch and Adjoins Sunny Breakfast Area
  - Roomy 3 Bay Side Entry Garage with Abundant Storage Complete with Carport

See 2981 For 2nd Floor Study and Sunroom  
Off Kitchen/Breakfast.

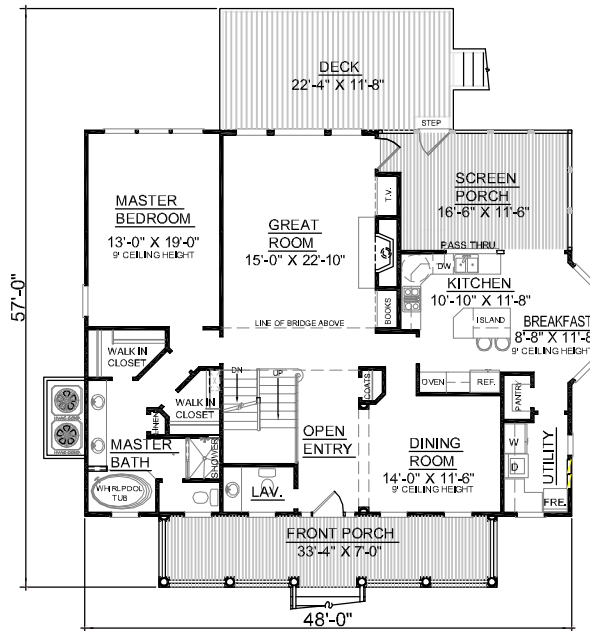


REAR ELEVATION

First Floor	1643	Sq. Ft.
Second Floor	974	Sq. Ft.
Finished Ground Floor	—	Sq. Ft.
Garage	1599	Sq. Ft.
Deck	276	Sq. Ft.
Screen Porch	208	Sq. Ft.
Front Porch	233	Sq. Ft.
Overall Height	37'-0"	

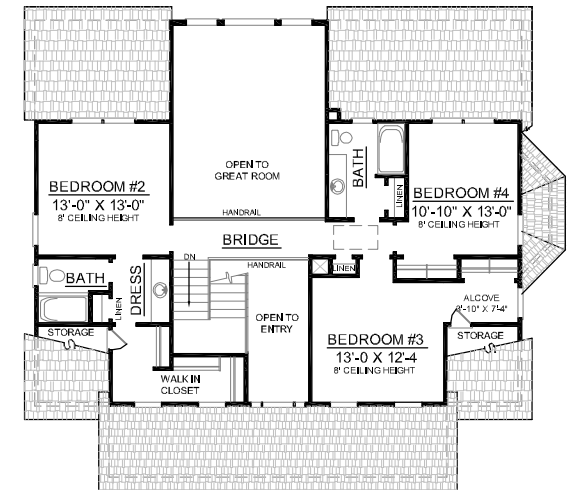


GROUND FLOOR PLAN



FIRST FLOOR PLAN  
Plan No.

2617



SECOND FLOOR PLAN