



FRONT ELEVATION

OVERVIEW

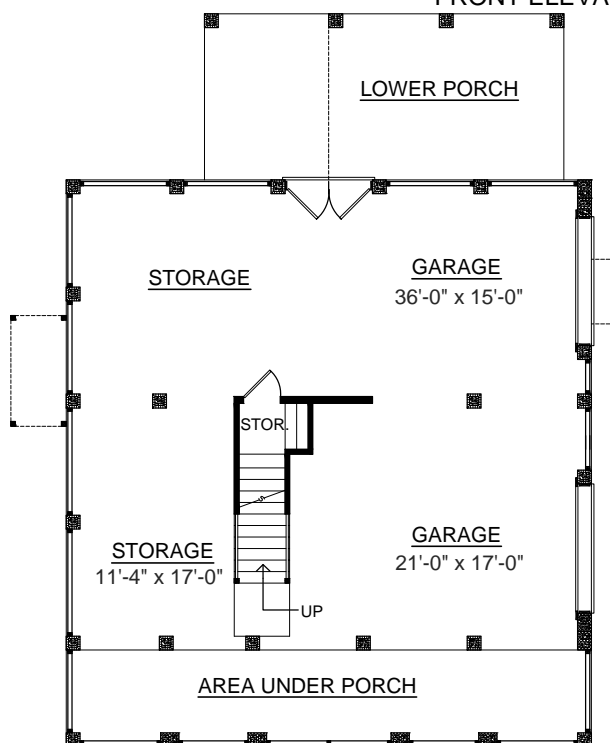
TOTAL: 2437 Sq. Ft.
BEDROOMS: 4
BATHROOMS: 3.5

- Concrete Block Pier Construction
- Parking for two Autos and a boat
- 9' Ceilings on both floors
- Open Great Room/Breakfast and Kitchen
- Formal Dining Room with Guest Bedroom
- Open Entry Hall
- Master Bedroom on second floor with Open Deck and Utility Room

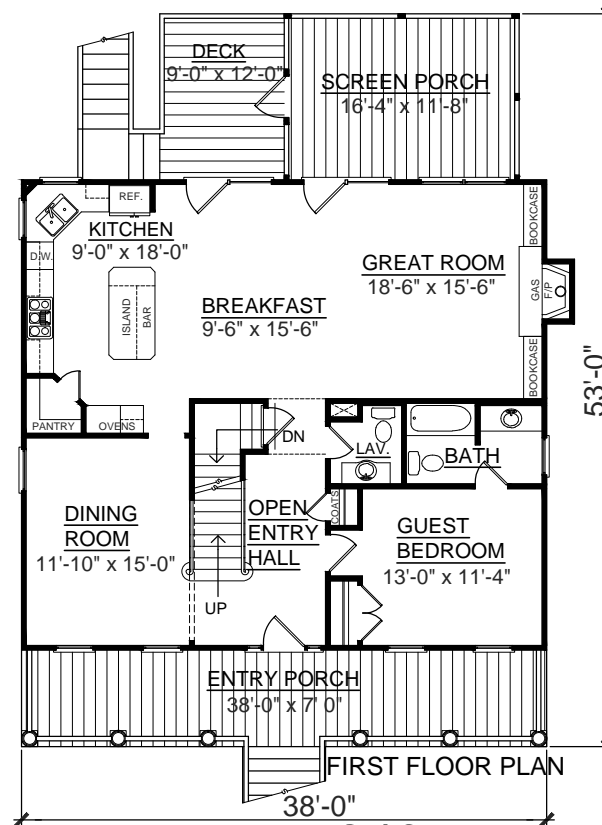
First Floor	1301	Sq. Ft.
Second Floor	1136	Sq. Ft.
Garage	1292	Sq. Ft.
Front Porch	266	Sq. Ft.
Screen Porch	204	Sq. Ft.
Deck	108	Sq. Ft.
Height	38'-10"	



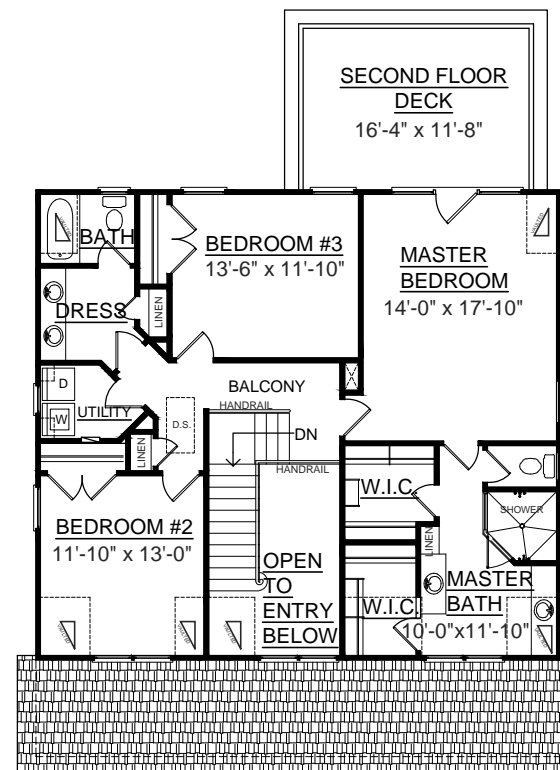
REAR ELEVATION



GROUND FLOOR PLAN



Plan No. **2437**



SECOND FLOOR PLAN