



FRONT ELEVATION

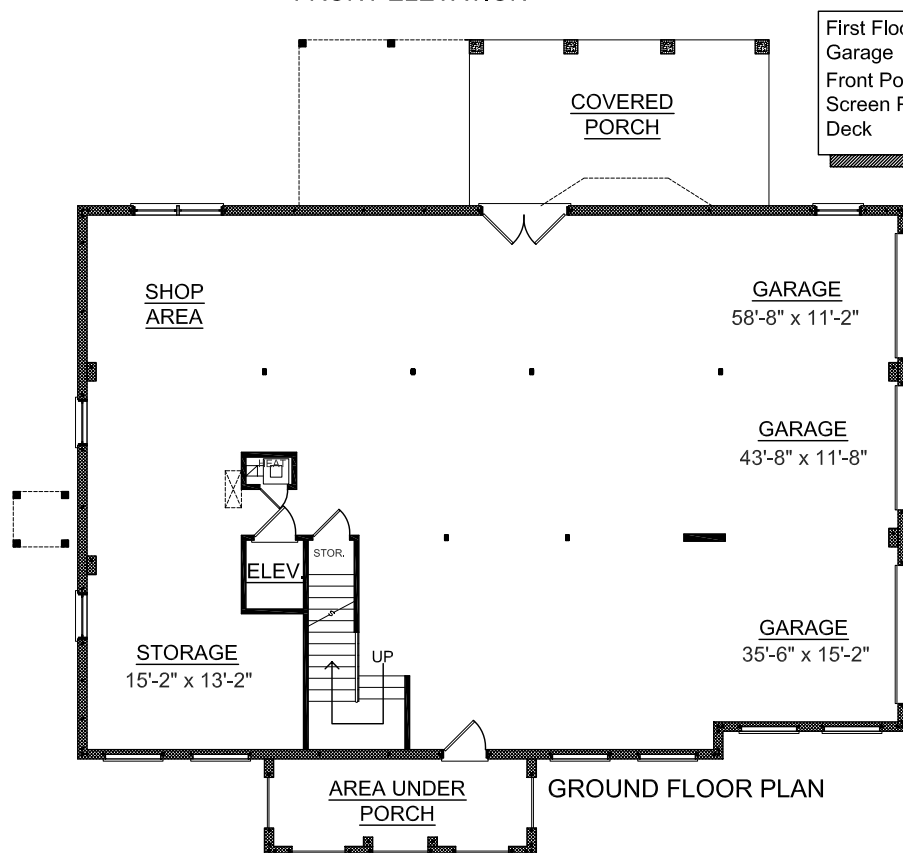
OVERVIEW

TOTAL: 2392 Sq. Ft.
 BEDROOMS: 3
 BATHROOMS: 2.5

- Elevated single level floor plans with 9' ceiling
- Large master bedroom suite off the entry hall with double walk-in closets
- Future elevator space for both floors
- Open kitchen-breakfast-great room with access to large screen porch
- Formal dining room & large utility area
- Guest bedrooms with private bath on main floor
- 3 car garage bay with abundant storage & future finished space



REAR ELEVATION



First Floor	2392 Sq. Ft.
Garage	2376 Sq. Ft.
Front Porch	138 Sq. Ft.
Screen Porch	241 Sq. Ft.
Deck	148 Sq. Ft.

