



FRONT ELEVATION

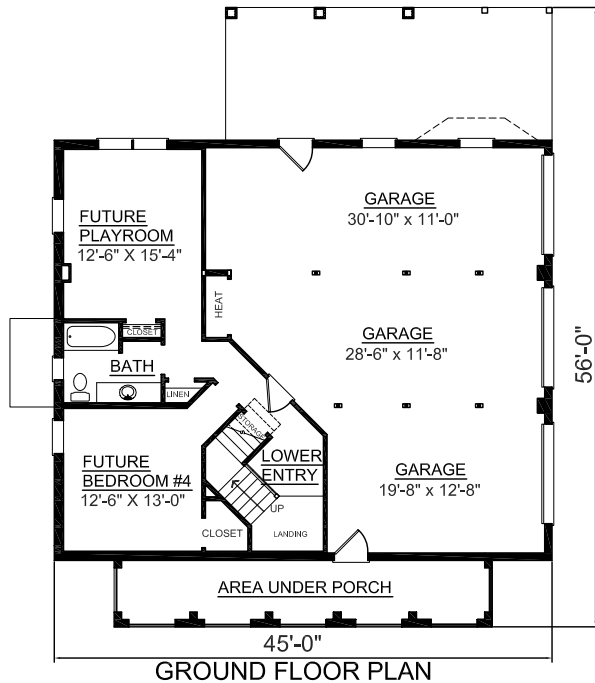
OVERVIEW

- TOTAL: 2380+ Sq. Ft.  
 BEDROOMS: 3+  
 BATHROOMS: 2.5 +
- 9' Ceiling Heights Throughout First Floor; 8' on Second
  - First Floor Master Bedroom Suite Boasts Spacious Bath with 2 Walk-In Closets, Cozy Angled Whirlpool Tub, and Dual Sink Vanity
  - Large Kitchen Includes Island, Breakfast Bar, and Walk-In Pantry all Adjoining a Sunny Breakfast Area
  - Second Floor Balcony Overlooks Great Room and Foyer
  - Ground Floor Plan Finished with Additional Living Spaces
  - Also See Plans #2310, 2785 A & B, #2955, and #2956 for Similar Layouts

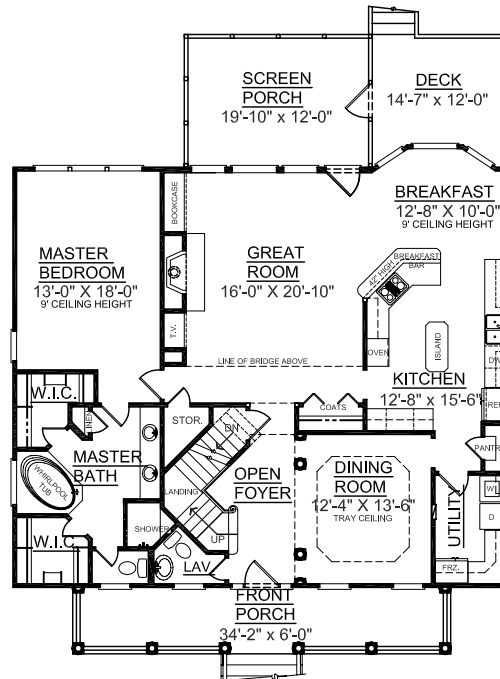
First Floor	1726	Sq. Ft.
Second Floor	654	Sq. Ft.
Finished Ground Floor	705	Sq. Ft.
Garage	1004	Sq. Ft.
Deck	134	Sq. Ft.
Screen Porch	204	Sq. Ft.
Front Porch	205	Sq. Ft.
Overall Height	33'-6"	



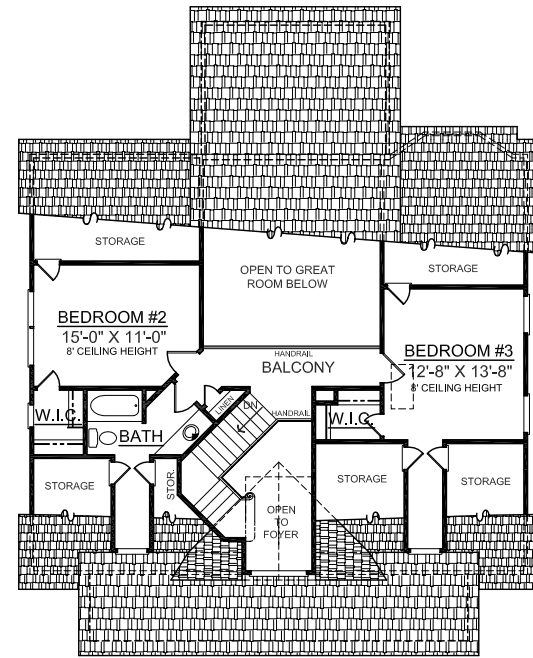
REAR ELEVATION



GROUND FLOOR PLAN



FIRST FLOOR PLAN



SECOND FLOOR PLAN