



FRONT ELEVATION

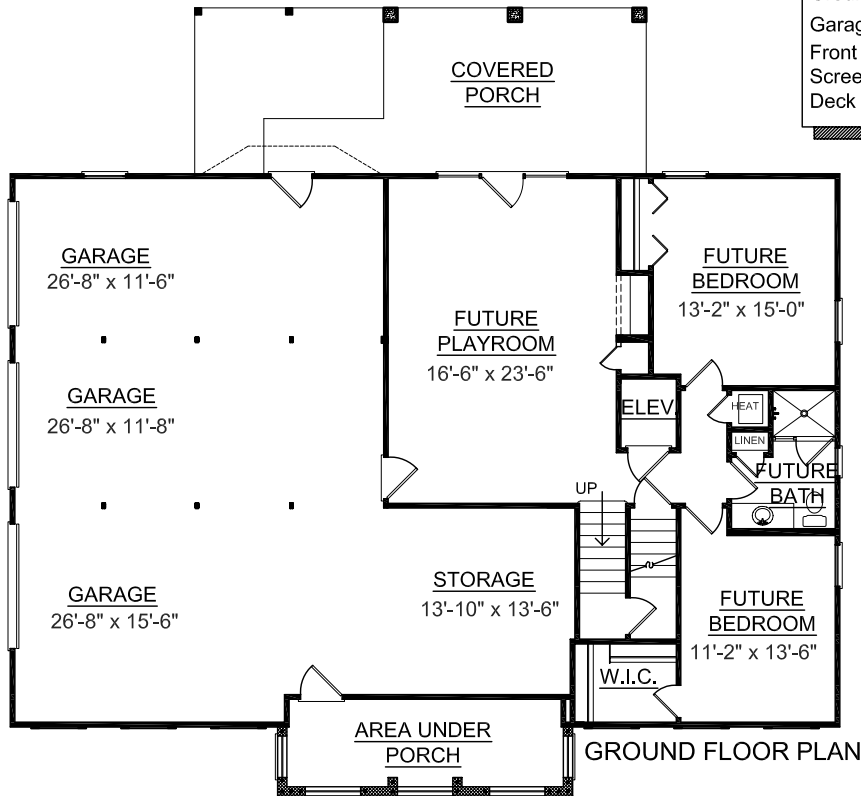
OVERVIEW

- TOTAL: 2379 Sq. Ft.
 BEDROOMS: 3
 BATHROOMS: 2.5
- Raised main floor plan above basement with 3 garage bays
 - 9' ceilings on both floors
 - Master bedroom suite with easy access to kitchen & utility areas
 - Guest or children's bedrooms with direct bathroom access
 - Open great room, kitchen-breakfast with access to large screen porch
 - Elevator shaft near entry
 - 2 bedrooms with hall bath & large playroom area located in basement

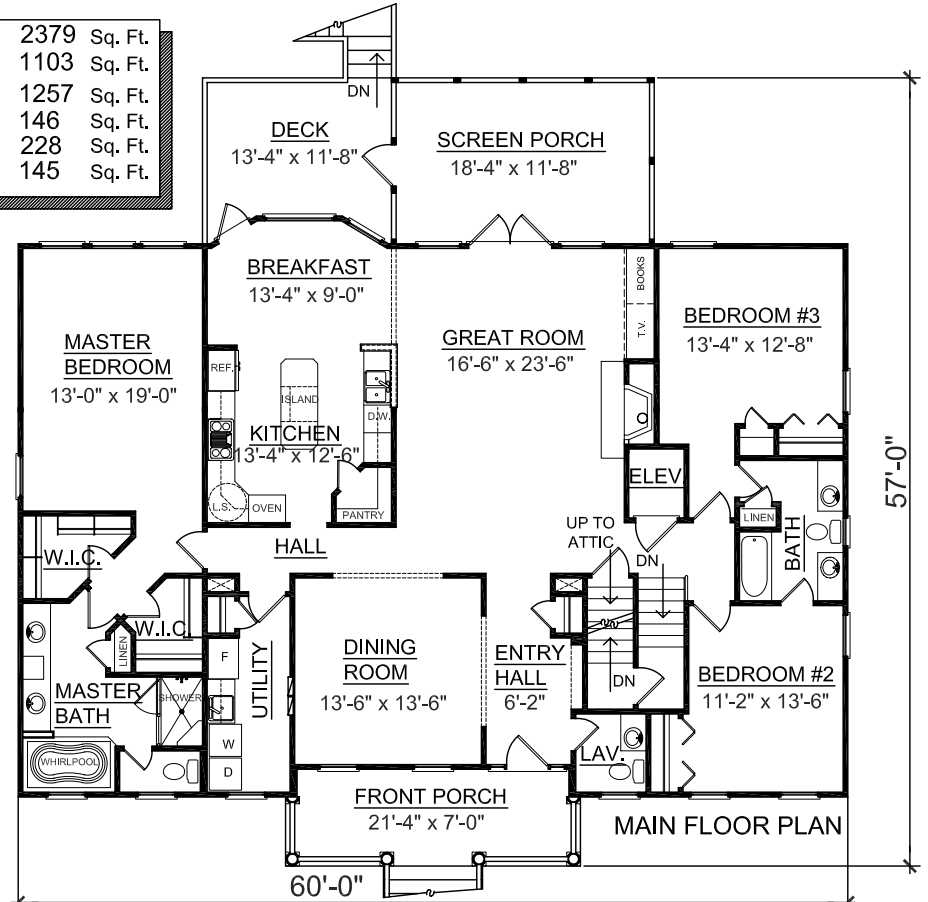


REAR ELEVATION

First Floor	2379 Sq. Ft.
Ground Floor	1103 Sq. Ft.
Garage	1257 Sq. Ft.
Front Porch	146 Sq. Ft.
Screen Porch	228 Sq. Ft.
Deck	145 Sq. Ft.



GROUND FLOOR PLAN



MAIN FLOOR PLAN