



FRONT ELEVATION

**OVERVIEW**

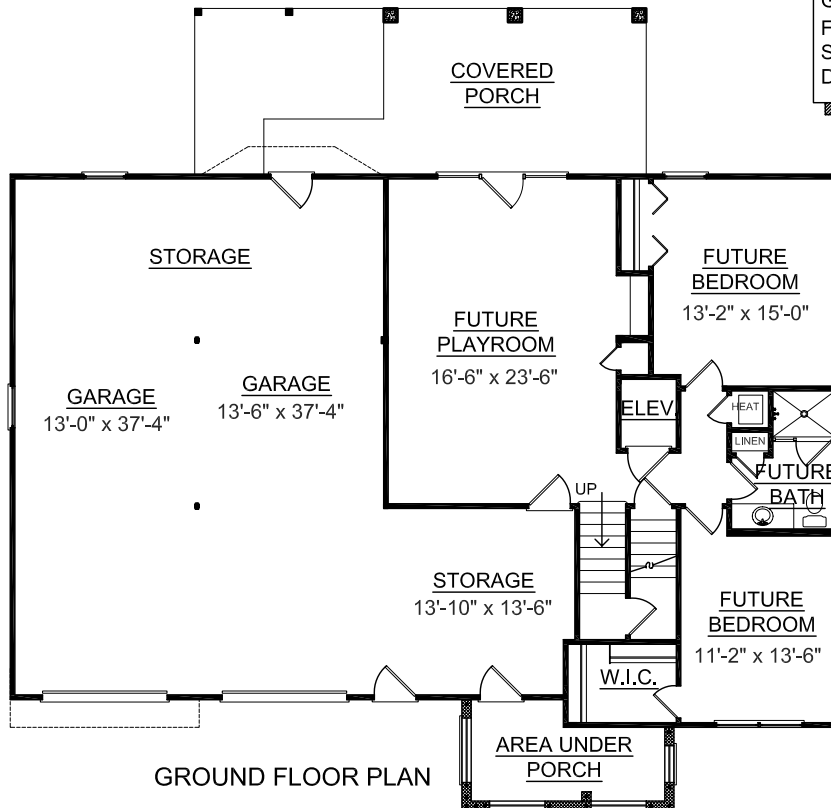
TOTAL: 2367 Sq. Ft.  
BEDROOMS: 3  
BATHROOMS: 2.5

- 9' ceiling in main floor & basement
- Split bedroom design with the master-bedroom suite close to the kitchen & utility room
- Children's bedroom with direct bathroom access
- Elevator shaft next to stairs with easy access to 3rd. floor attic
- Open great room, kitchen & breakfast with entrance to large screen porch
- Future playroom & 2 guest bedrooms with bath in basement
- Two large garage bays with abundant storage

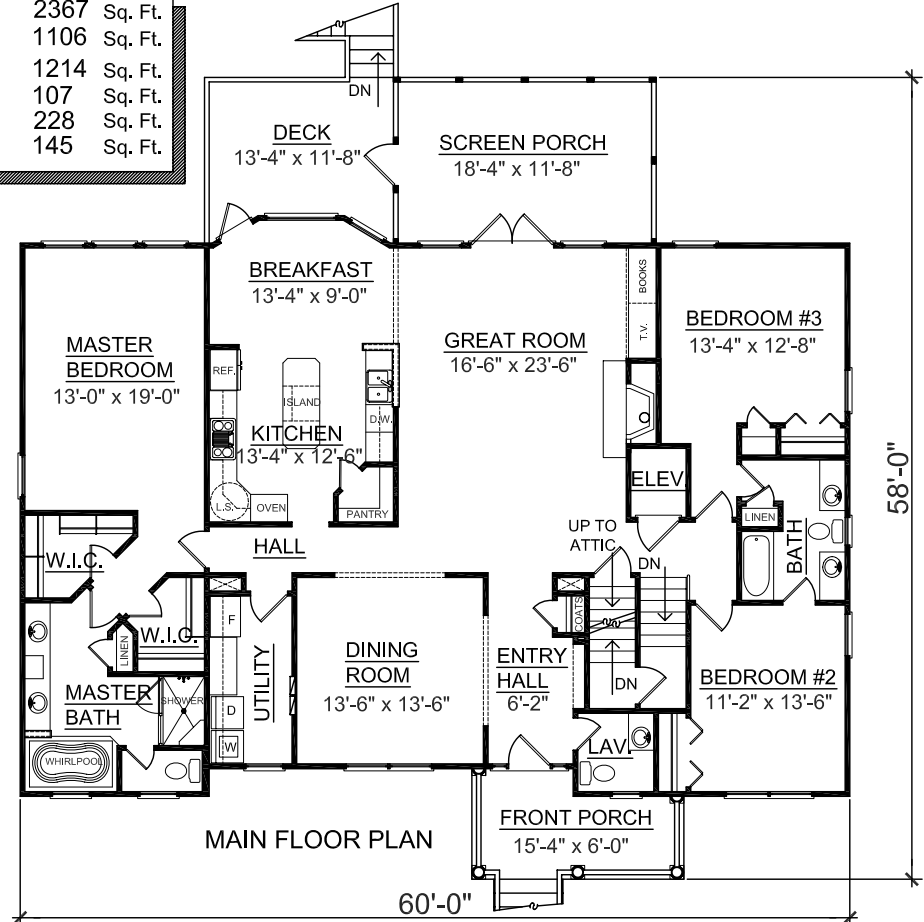


REAR ELEVATION

First Floor	2367	Sq. Ft.
Ground Floor	1106	Sq. Ft.
Garage	1214	Sq. Ft.
Front Porch	107	Sq. Ft.
Screen Porch	228	Sq. Ft.
Deck	145	Sq. Ft.



GROUND FLOOR PLAN



MAIN FLOOR PLAN