



FRONT ELEVATION

### OVERVIEW

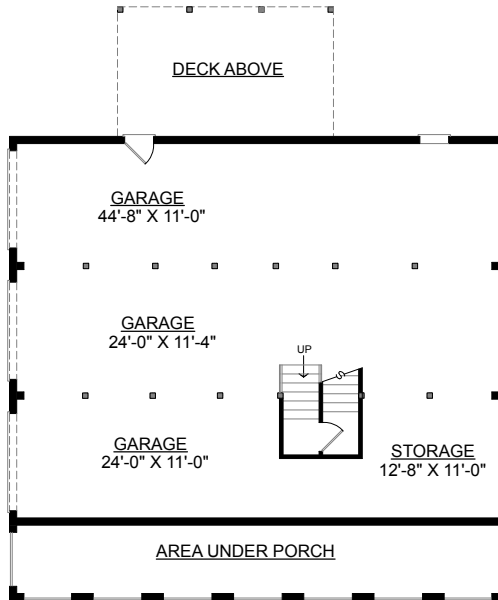
**TOTAL:** 2237 Sq. Ft.  
**BEDROOMS:** 3  
**BATHROOMS:** 2.5

- Full Length Front Entry Porch
- Kitchen and Breakfast Area Open to Great Room
- Master Bedroom Suite Boasts 2 Walk-In Closets, Dual Sink Vanity, and Whirlpool Tub
- Second Floor Bridge Overlooks Foyer and Great Room
- Formal Dining Room
- 3 Bay Side Entry Garage with Storage Space
- 9' Ceilings On First Floor; 8' Ceilings on Second

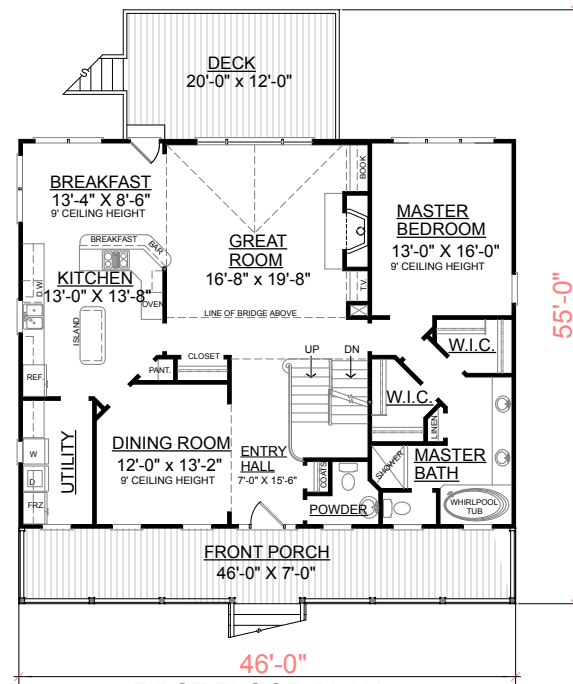


REAR ELEVATION

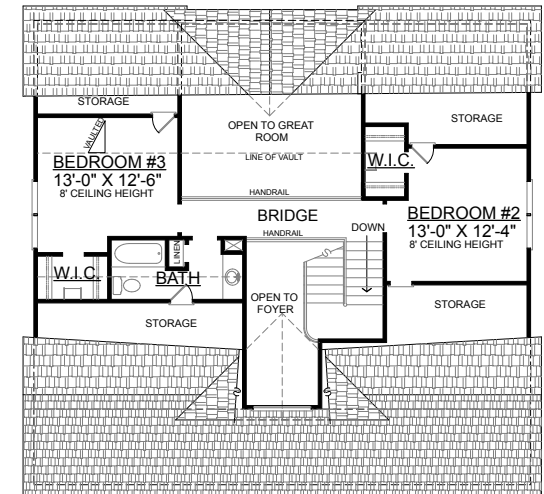
First Floor	1656	Sq. Ft.
Second Floor	581	Sq. Ft.
Finished Ground Floor	-----	Sq. Ft.
Garage	1656	Sq. Ft.
Deck	240	Sq. Ft.
Screen Porch	-----	Sq. Ft.
Front Porch	322	Sq. Ft.
Overall Height	32'-3"	



GROUND FLOOR PLAN



FIRST FLOOR PLAN



SECOND FLOOR PLAN

Plan No.  
**2237-B**