



FRONT ELEVATION

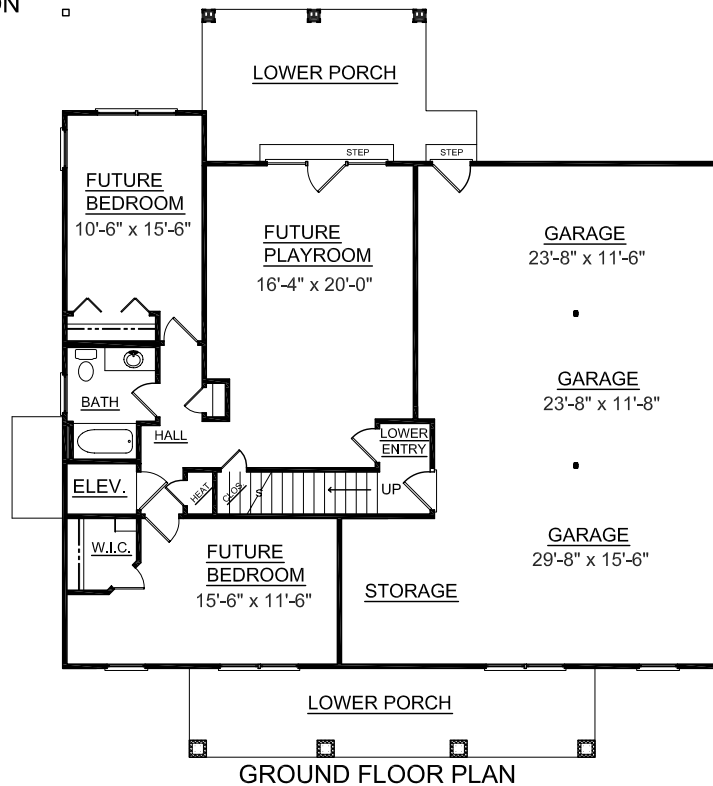
OVERVIEW

- TOTAL: 2125 Sq. Ft. + 1109 BASEMENT
 BEDROOMS: 3 + BASEMENT
 BATHROOMS: 2 + BASEMENT
- 9' ceilings through out
 - Kitchen breakfast open into great room
 - Large utility with walk-in pantry
 - Formal dining room
 - Large Master bedroom with Dressing bath with large walk-in closet
 - Three car garage with future living area
 - Future elevator space
 - Permanent stairs to attic storage

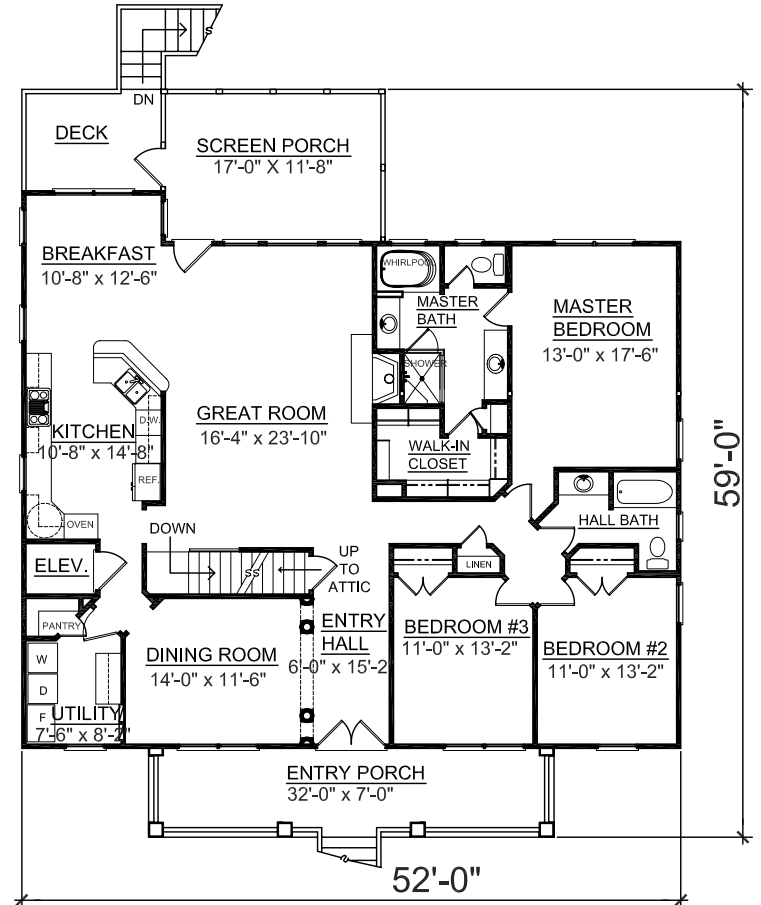


REAR ELEVATION

First Floor	2125	Sq. Ft.
Ground Floor	1109	Sq. Ft.
Garage	1017	Sq. Ft.
Screen Porch	211	Sq. Ft.
Front Porch	224	Sq. Ft.
Deck	88	Sq. Ft.



GROUND FLOOR PLAN



FIRST FLOOR PLAN

Plan No.

2125-1109