

FRONT ELEVATION

OVERVIEW

TOTAL: 2034 Sq. Ft.

BEDROOMS: 3

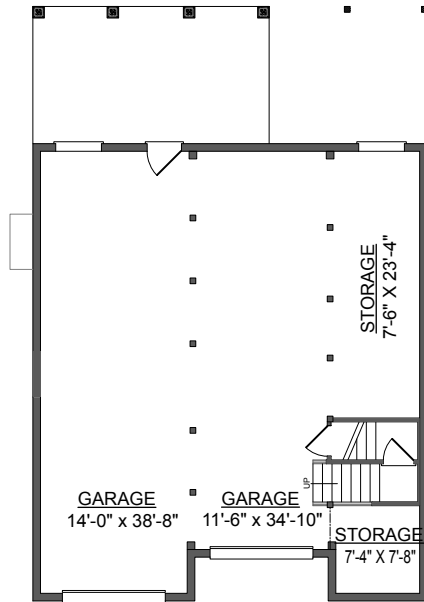
BATHROOMS: 2

- Perfect Cozy Plan for Narrow Waterfront or Low-Lying Lots
- Open Foyer Allows for Angled View of Great Room
- Open Plan Great for Entertaining
- Great Screen Porch and Rear Deck for Scenic Views
- First Floor Master Suite Complete with Walk-In Closet, Dual-Sink Vanity, and Whirlpool Tub
- Second Floor Bedrooms Include Shared Bath with Dressing Area
- 9' Ceilings on First Floor; 8' on Second Floor

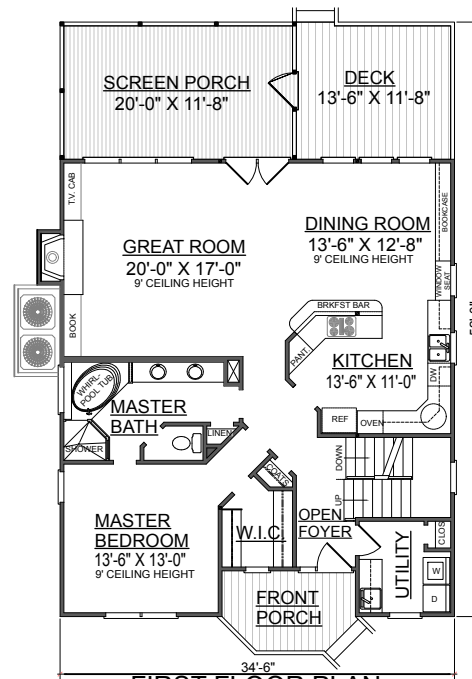
First Floor	1333	Sq. Ft.
Second Floor	701	Sq. Ft.
Finished Ground Floor	-----	Sq. Ft.
Garage	1333	Sq. Ft.
Deck	166	Sq. Ft.
Screen Porch	248	Sq. Ft.
Front Porch	78	Sq. Ft.
Overall Height	37'-3"	



REAR ELEVATION



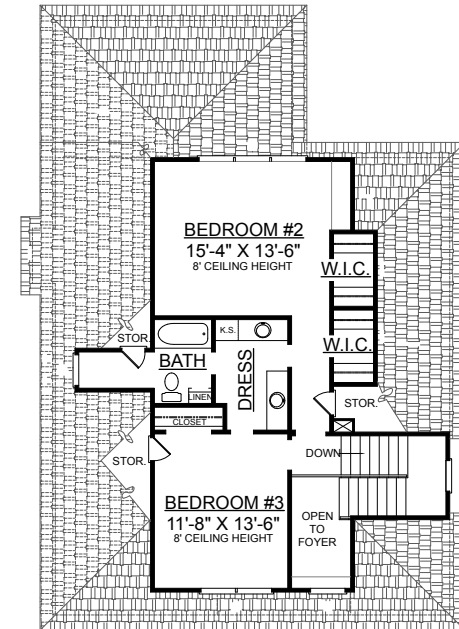
GROUND FLOOR PLAN



FIRST FLOOR PLAN

Plan No.

2034



SECOND FLOOR PLAN