

FRONT ELEVATION

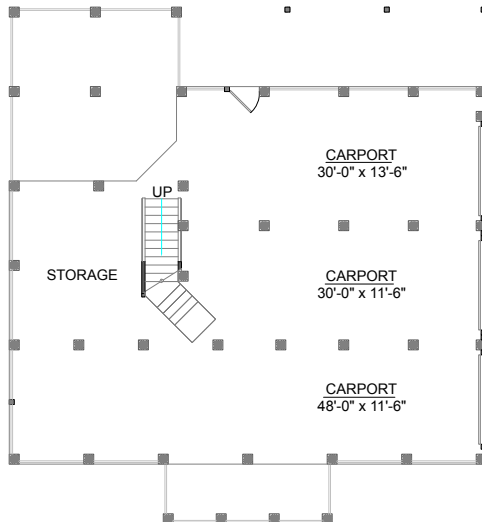
OVERVIEW

TOTAL: 1662-242 SQ. FT.
BEDROOMS: 3
BATHROOMS: 2
-9' Ceilings Throughout First Floor
-Vaulted Ceilings in Great Room and Foyer
-The Loft Overlooks Entry and Great Room
-12" Concrete Block Piers for Flood Zones
-Split Bedroom Plan
-Split Hall Bath
-Master Bedroom Suite Boasts Walk-In Closet and Spacious Bath with Whirlpool Tub
-Large Screen Porch with Acces from Master Bedroom and Great Room

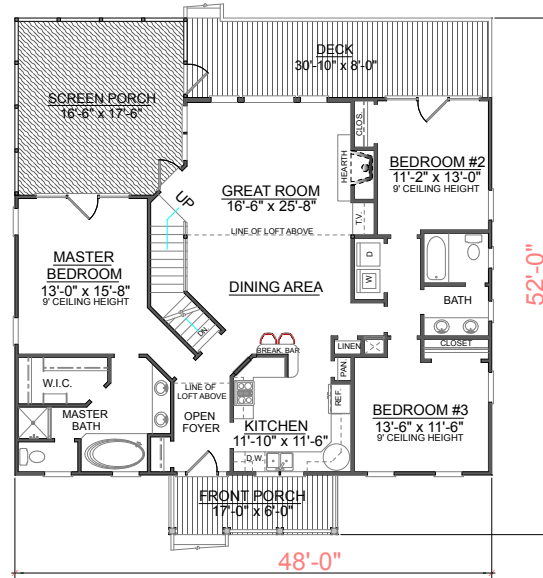
First Floor	1662 Sq. Ft.
Loft	242 Sq. Ft.
Finished Ground Floor	-----Sq. Ft.
Carport	1662 Sq. Ft.
Deck	245 Sq. Ft.
Screen Porch	301 Sq. Ft.
Front Porch	102 Sq. Ft.
Overall Height	32'-2"



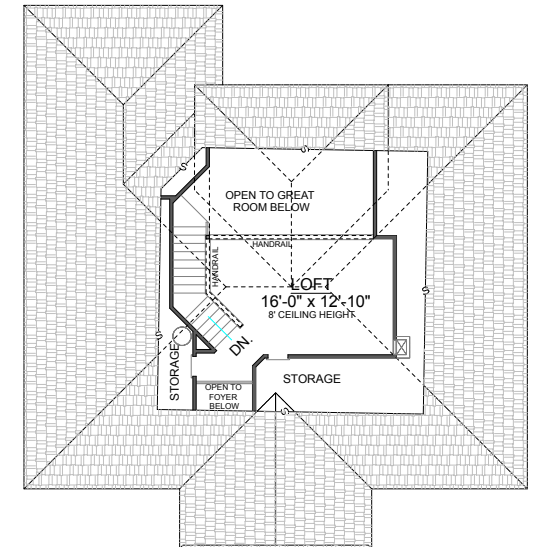
REAR ELEVATION



GROUND FLOOR PLAN



FIRST FLOOR PLAN



LOFT FLOOR PLAN

Plan No.
1662-252