



OVERVIEW

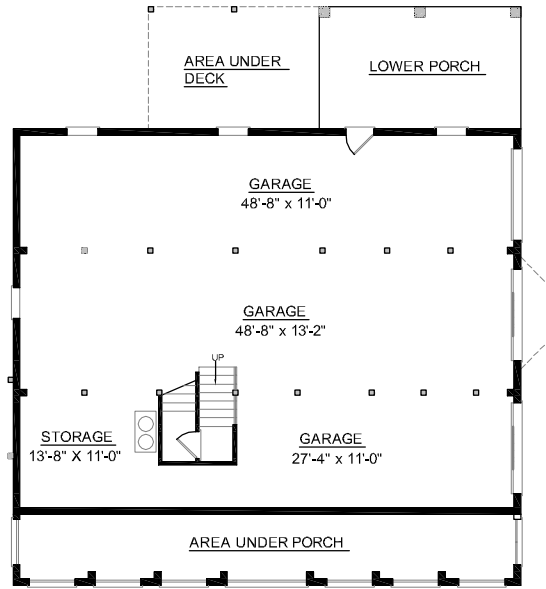
- TOTAL:** 3234 Sq. Ft.
BEDROOMS: 4
BATHROOMS: 3.5
- 9' Ceiling Heights Throughout First Floor; 8' on Second Floor
 - Unique Front Boasts Full Length Porch with Barrel Vault Accented With Symmetrical Second Story Arch-Top Windows
 - Formal Dining Room with Decorative Columns and Tray Ceiling
 - Spacious Kitchen Brightened by Breakfast Area Bay Window and Sunroom
 - First Floor Master Suite Flaunts Exquisite Master Bath
 - Second Floor Has 3 Bedrooms Complete With Large Playroom Which Boasts Expansive Arch-Top Windows
 - 3 Bay Side Entry Garage with Abundant Storage



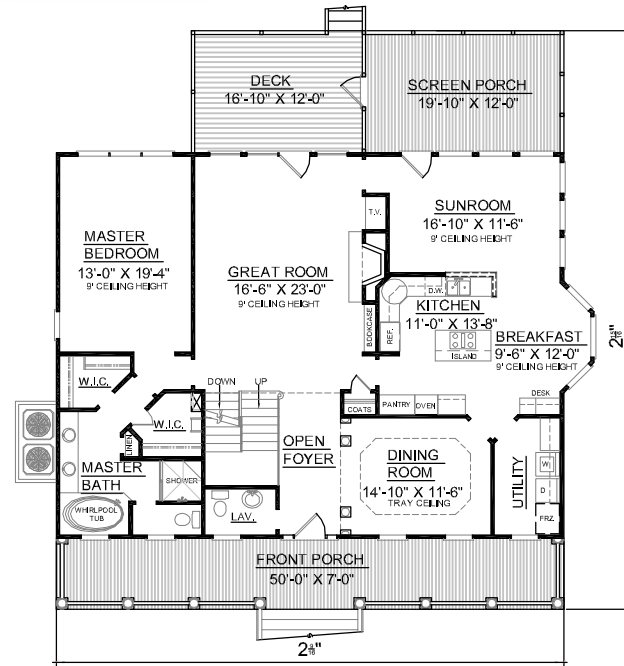
REAR ELEVATION

First Floor	1924	Sq. Ft.
Second Floor	1310	Sq. Ft.
Future Basement	----	Sq. Ft.
Garage	1900	Sq. Ft.
Deck	202	Sq. Ft.
Screen Porch	238	Sq. Ft.
Front Porch	350	Sq. Ft.
Overall Height	34'-5"	

FRONT ELEVATION

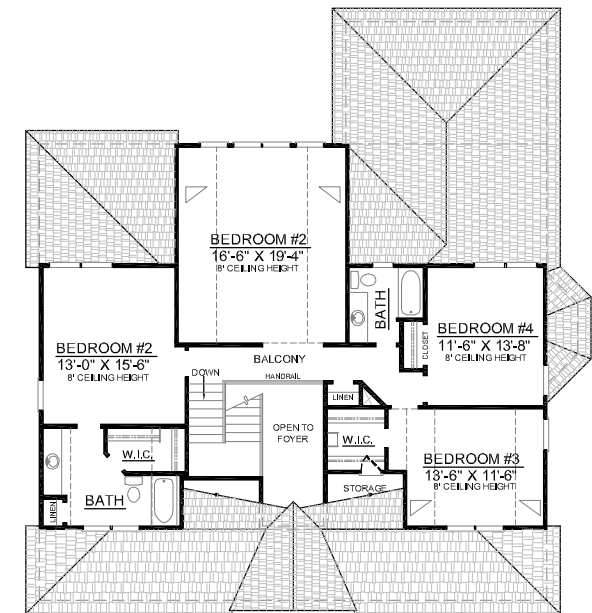


GROUND FLOOR PLAN



FIRST FLOOR PLAN
Plan No.

3234



SECOND FLOOR PLAN