



FRONT ELEVATION

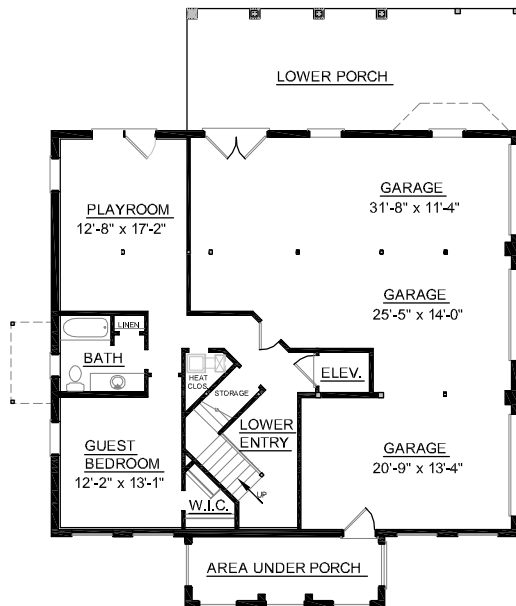
OVERVIEW

- TOTAL: 3203+ Sq. Ft.
- BEDROOMS: 4+
- BATHROOMS: 3.5+
- 9' Ceiling Height Throughout First and Second Floor
- Open Two Story Foyer Adjoins Formal Dining Room Separated by Elegant Decorative Columns and Tray Ceiling
- Convenient Elevator Accessible to all Floors
- Spacious Great Room Open to Breakfast Area and Kitchen with Breakfast Bar
- Finished Ground Floor with Additional Bedroom and Playroom
- First Floor Master Suite Showcases Striking Bath Complete with 2 Walk-In Closets, Dual Sink Vanity, and Relaxing Whirlpool Tub

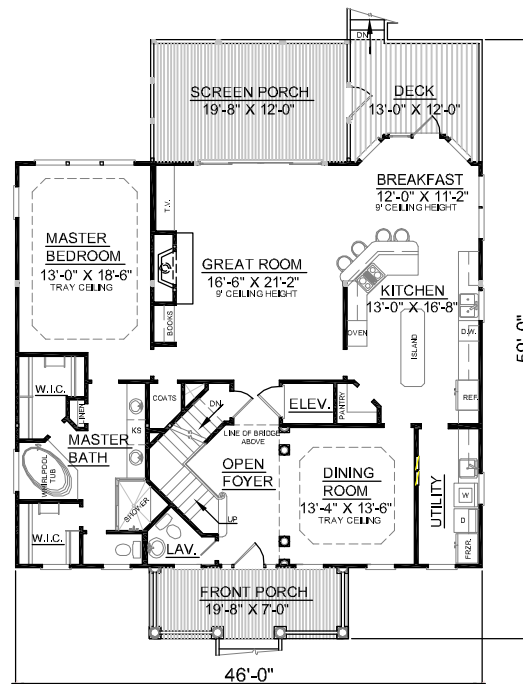


REAR ELEVATION

First Floor	1863	Sq. Ft.
Second Floor	1340	Sq. Ft.
Finished Ground Floor	812	Sq. Ft.
Garage	1028	Sq. Ft.
Deck	133	Sq. Ft.
Screen Porch	236	Sq. Ft.
Front Porch	138	Sq. Ft.
Upper Deck	236	Sq. Ft.
Overall Height	35'-11"	

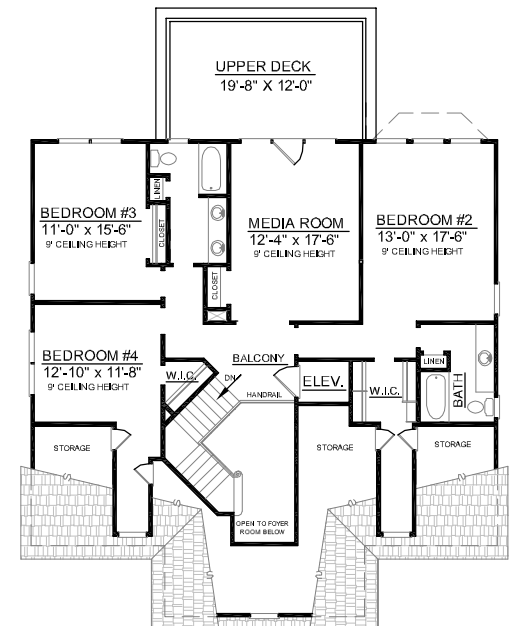


GROUND FLOOR PLAN



FIRST FLOOR PLAN
Plan No.

3203-812



SECOND FLOOR PLAN