



FRONT ELEVATION

OVERVIEW

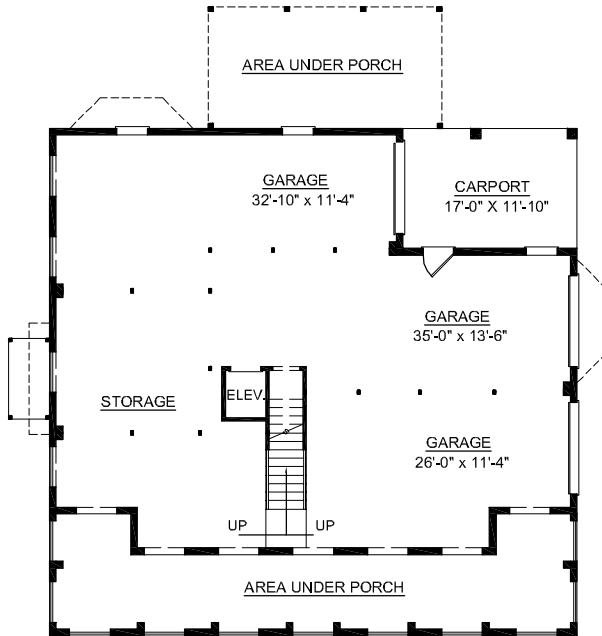
TOTAL: 3025 Sq. Ft.  
BEDROOMS: 3  
BATHROOMS: 3.5

- 9' Ceilings Throughout First Floor; 8' on Second Floor
- Unique Second Floor Balcony Overlooks Foyer and Expansive Arch-Top Two Story Windows in Great Room
- Impressive Entry Introduces Guests to Front-Facing Formal Dining Room and Stunning Library
- Lovely First Floor Master Suite Brightened by Bay Window Showcases Luxurious Master Bath with Relaxing Whirlpool Tub
- Handsome Kitchen Boasts Large Island with Breakfast Bar, Pantry, and Breakfast Area Complete with Screen Porch Access
- 3 Bay Side Entry Garage with Carport and Abundant Storage
- See Plan #3226 for Sunroom Off Kitchen/Breakfast

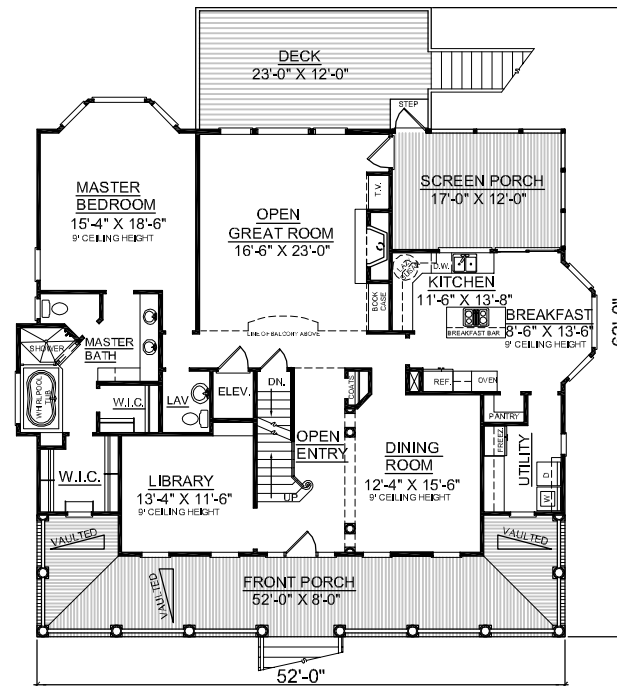


REAR ELEVATION

First Floor	1994	Sq. Ft.
Second Floor	1031	Sq. Ft.
Finished Ground Floor	-----	Sq. Ft.
Garage	1917	Sq. Ft.
Deck	276	Sq. Ft.
Screen Porch	203	Sq. Ft.
Front Porch	480	Sq. Ft.
Overall Height	35'-9"	

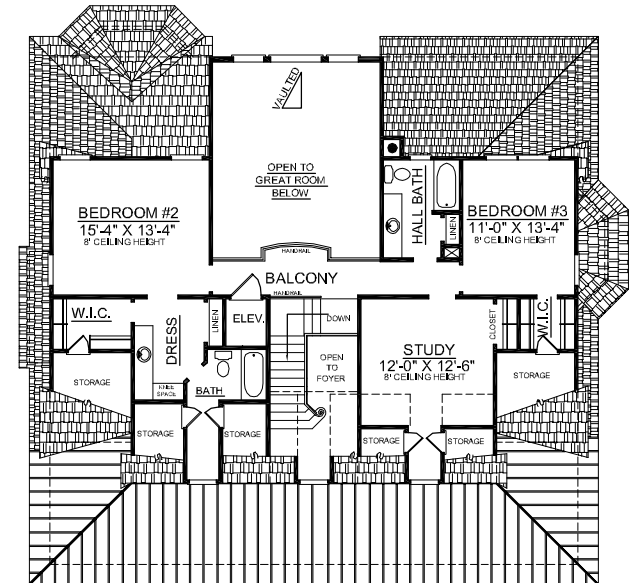


GROUND FLOOR PLAN



FIRST FLOOR PLAN  
Plan No.

3025



SECOND FLOOR PLAN