



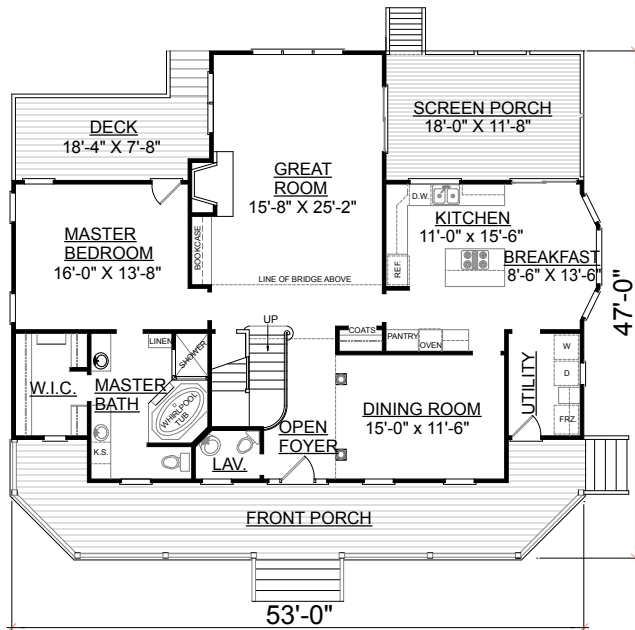
FRONT ELEVATION



REAR ELEVATION

OVERVIEW

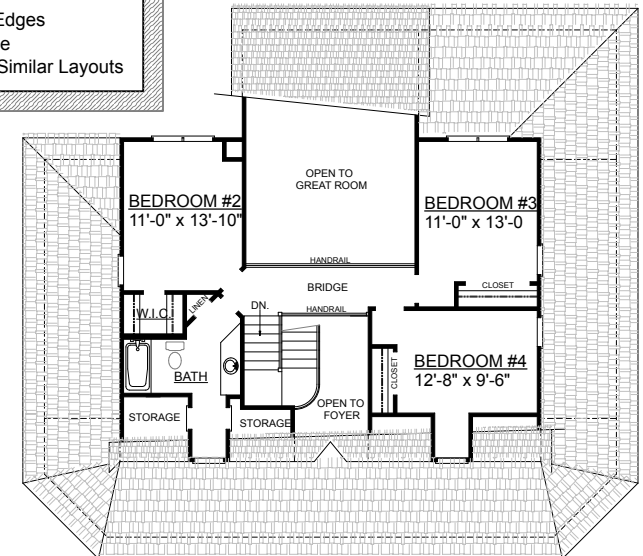
TOTAL: 2377 Sq. Ft.
BEDROOMS: 4
BATHROOMS: 2.5
-9' Ceiling Heights Throughout First Floor
-Crawl Space Construction
-First Floor Master Suite Boasts Access to Rear Deck, and Includes Spacious Walk-In Closet, Double Vanities, and Elegant Angled Whirlpool Tub
-Second Floor Bridge Overlooks Impressive Foyer and Great Room
-Inviting Wrap Porch Design with Angled Edges
-Separate Detached Garages are Available
-See Plans #2706, #2908, and #3090 for Similar Layouts



FIRST FLOOR PLAN

First Floor	1641	Sq. Ft.
Second Floor	736	Sq. Ft.
Finished Ground Floor	----	Sq. Ft.
Garage	----	Sq. Ft.
Deck	143	Sq. Ft.
Screen Porch	220	Sq. Ft.
Front Porch	392	Sq. Ft.
Overall Height	28'-2"	

Note: Separate Garage is 550 Sq. Ft.



SECOND FLOOR PLAN