



FRONT ELEVATION



REAR ELEVATION

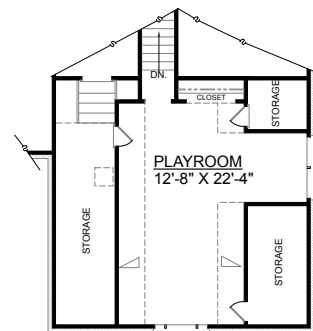
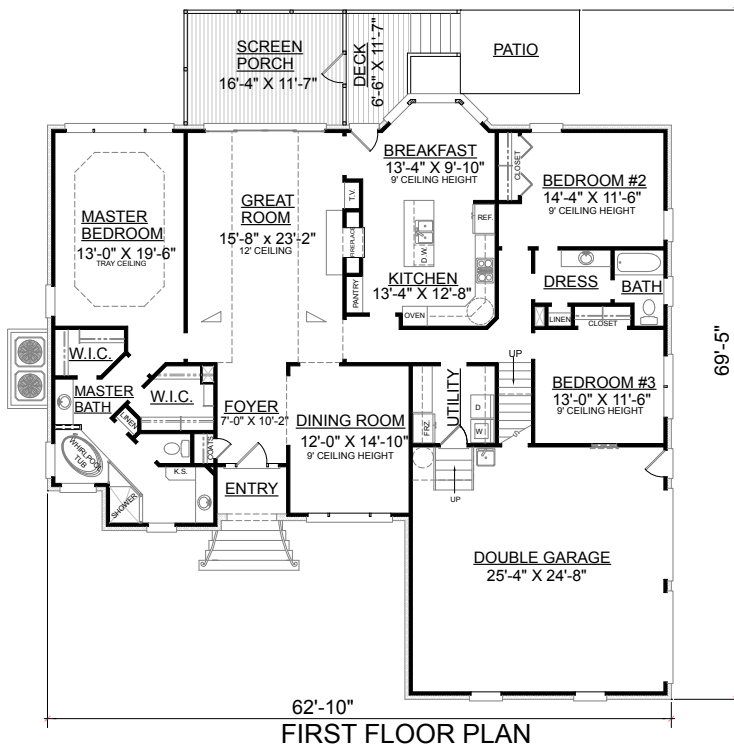
OVERVIEW

TOTAL: 2293+ Sq. Ft.

BEDROOMS: 3

BATHROOMS: 2

- 9' Ceilings on First Floor & 12' Sloped Ceilings in Great Room
- Brick Veneer Exterior
- Single Level, Split Bedroom Plan
- Crawl Space Construction
- Cozy 2-Way Fireplace Between Great Room and Kitchen
- Angled Master Bath Creates Feeling of Large Space
- Future Playroom Located Above Double Garage
- See Plan #2224-332 for Similar Layout



Plan No.

2293-390

First Floor (9')	2293 Sq. Ft.
Playroom	390 Sq. Ft.
Garage	676 Sq. Ft.
Deck	75 Sq. Ft.
Screen Porch	189 Sq. Ft.
Front Porch	--- Sq. Ft.
Overall Height	27'-8" +/-