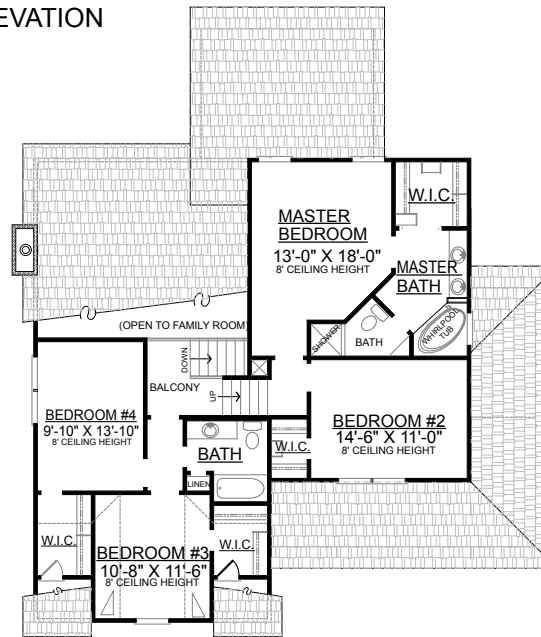
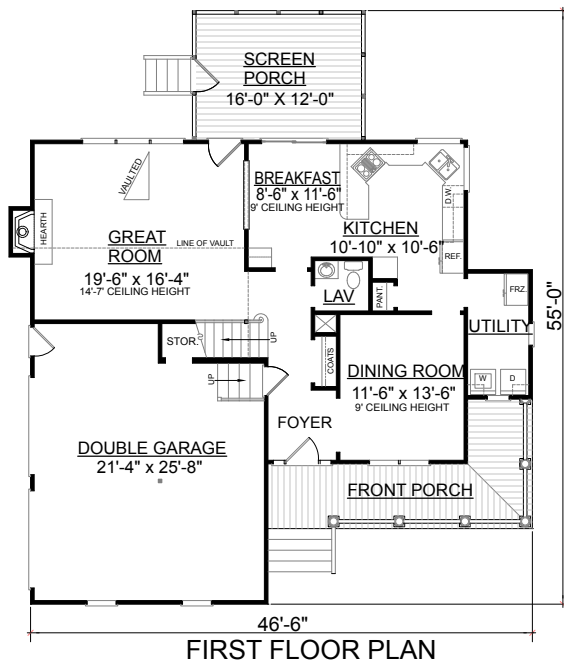


FRONT ELEVATION



REAR ELEVATION



**OVERVIEW**

TOTAL: 2163 Sq. Ft.

BEDROOMS: 3

BATHROOMS: 2.5

- Small Enough to Fit on Most Lots, This Spacious Plan Provides Feel of a Larger Home
- Cozy Wrap Around Porch
- Foyer Opens to Formal Dining Room
- Vaulted Great Room Complete with Charming Fireplace
- Private Master Suite Separated From Other Floors Includes a Home Office, Large Walk-In Closet, and Elegant Bath
- Additional Two Bedrooms with Shared Hall Bath
- Two Car Garage With Abundant Storage Space
- 9' Ceilings Throughout First Floor, 8' on Second Floor

First Floor	1051	Sq. Ft.
Second Floor	1112	Sq. Ft.
Finished Ground Floor	-----	Sq. Ft.
Garage	537	Sq. Ft.
Deck	-----	Sq. Ft.
Screen Porch	192	Sq. Ft.
Front Porch	183	Sq. Ft.
Overall Height	31'-4" +/-	

Plan No.

**2163**