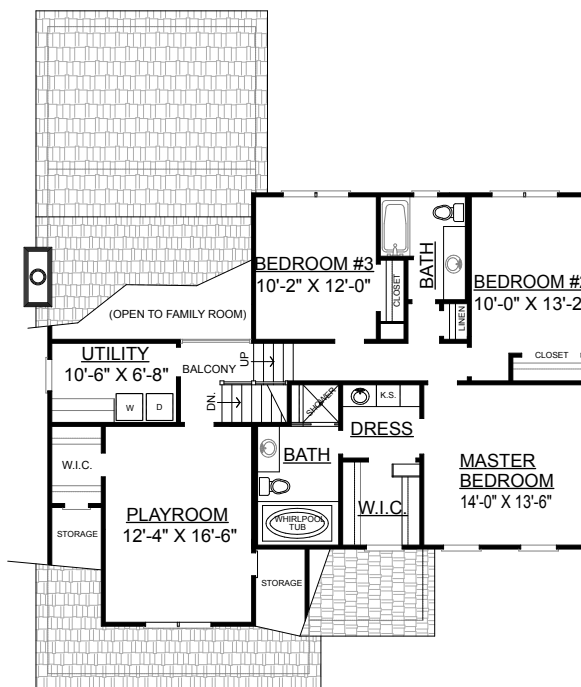
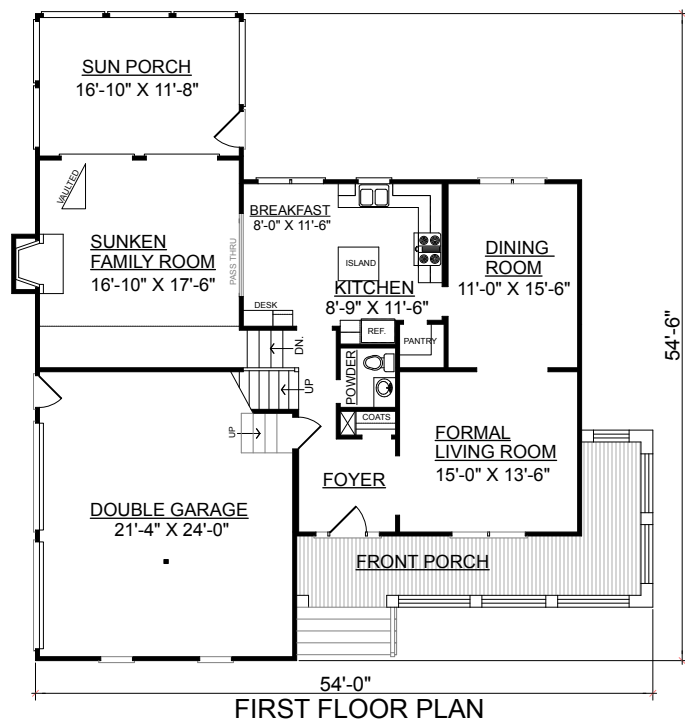


FRONT ELEVATION



REAR ELEVATION



OVERVIEW

TOTAL: 2121+ Sq. Ft.
BEDROOMS: 3
BATHROOMS: 2.5

- Wrap Around Porch Welcomes You into This Formal Plan
- Vaulted Open Family Room with Double Access to Sun Porch
- Unique Plan has Single Stairway Leading to Utility and Playroom on the Mid-Level, and Continues to Second Floor
- Formal Living Room and Dining Room
- Convenient Pass-Thru From Breakfast Area to Sunken Family Room
- Balcony From Mid-Level Overlooks Family Room
- Unique Location of Utility Room Allows for Easy Access from Second Floor Bedrooms

8' First Floor	1131 Sq. Ft.
8' Second Floor	990 Sq. Ft.
Playroom	246 Sq. Ft.
Sun Room	210 Sq. Ft.
Front Porch	228 Sq. Ft.
Overall Height	27'-0"

Plan No.

2121-246